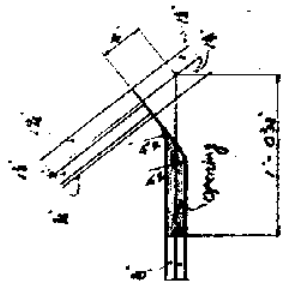
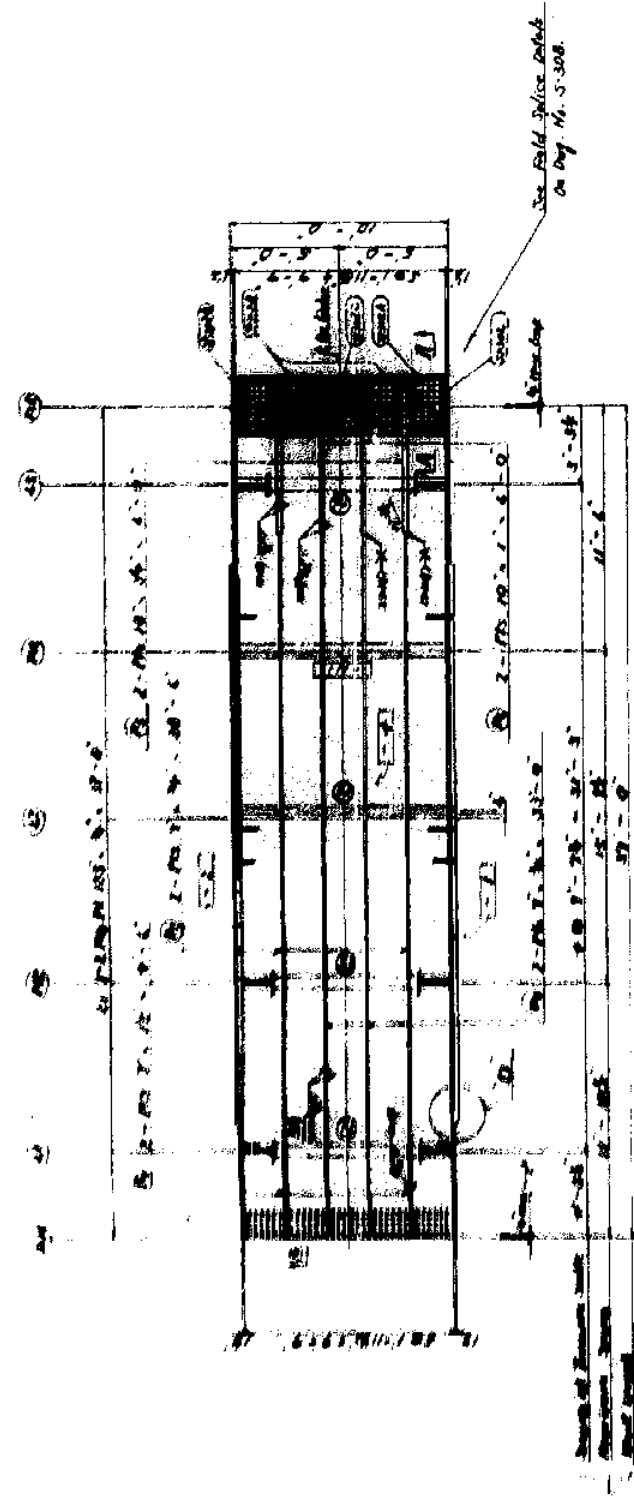
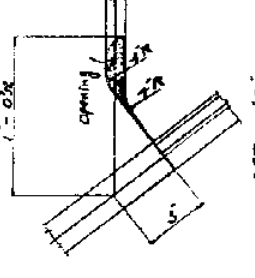


BOX GIRDER BOTTOM FLANGE BA12 B512  
(Scale: 1/4" = 1'-0")

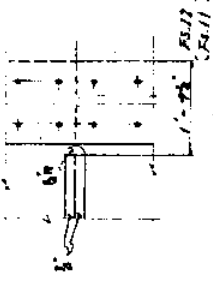
BA12 B512  
B512



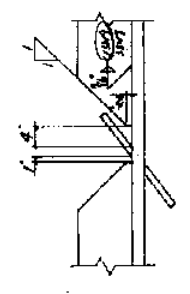
DET. 'A'  
Scale: 1/8" = 1'-0"  
(See Day No. S-288.)



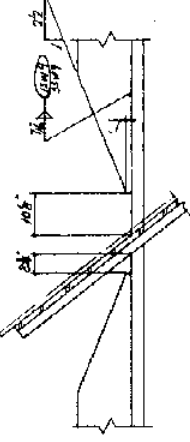
DET. 'B'  
Scale: 1/8" = 1'-0"  
(See Day No. S-288.)



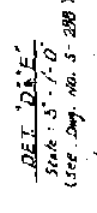
DET. 'C'  
Scale: 1/4" = 1'-0"  
(See Day No. S-288.)



DET. 'D'  
Scale: 3/8" = 1'-0"  
(See Day No. S-288.)



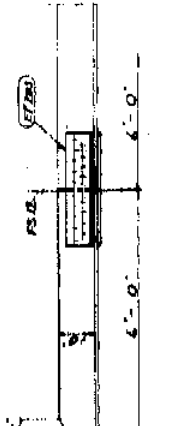
DET. 'E'  
Scale: 3/8" = 1'-0"  
(See Day No. S-288.)



DET. 'F'  
Scale: 3/8" = 1'-0"  
(See Day No. S-288.)



SEC. B-B  
Scale: 1/2" = 1'-0"



SEC. A-A  
Scale: 1/2" = 1'-0"



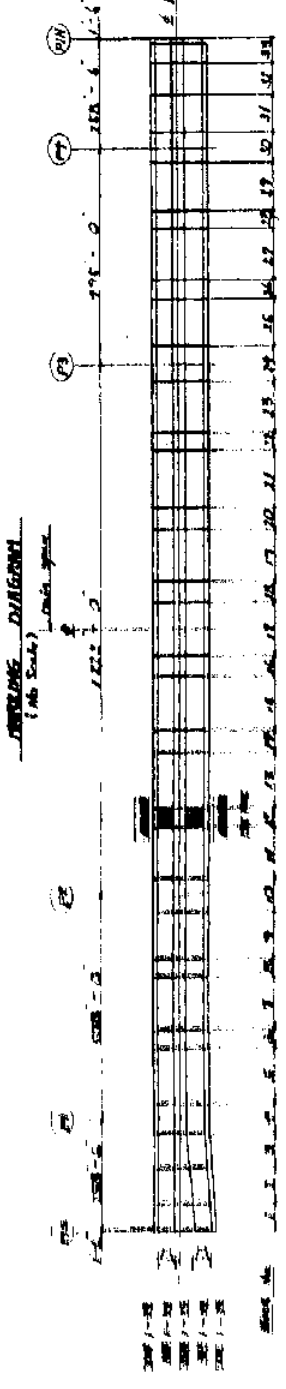
DET. 'D'  
Scale: 1" = 1'-0"

Mill to final exterior (rough)  
Stiff only

Longitudinal End Detail  
Scale: 1/2" = 1'-0"  
(Exterior stiff only... (A), (B), (C))

NOTES:  
1 For notes, see Day No. S-228 & S-288.

TITLE	BOX GIRDER BOTTOM FLANGE BA12 B512
STATE OF LOUISIANA	DEPARTMENT OF TRANSPORTATION AND DEVELOPMENT
PROJECT NO.	LA 1-310-4251223
PROJECT NAME	MISSISSIPPI SUPERSTRUCTURE
DESIGNED BY	...
CHECKED BY	...
DATE	...



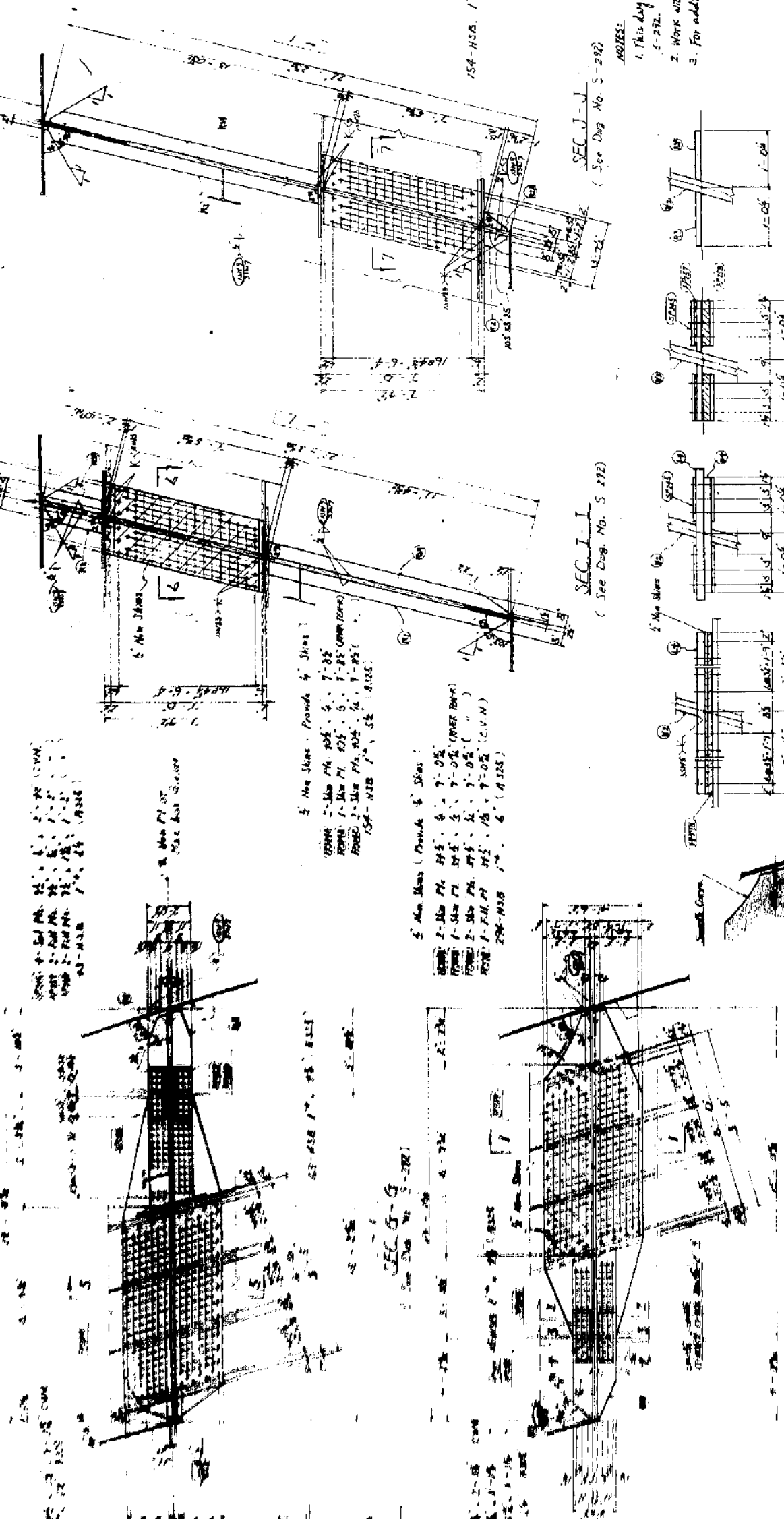




**BOX GIRDER WEB BAZZ. BRZ. (3/4)**

Scale: 5'-1"=1'-0"

294



154-N18 1" x 5" A136

SEC. J-J  
(See Det. No. S-292)

SEC. I-I  
(See Det. No. S-292)

SEC. 7-7

SEC. 3-3

SEC. 2-2

SEC. 1-1

SEC. 6-6

SEC. 5-5

SEC. 4-4

SEC. 8-8

NOTES:

1. This drawing shows sect. of interior web (I-I) on Det. No. S-292.
2. Works with Det. No. S-291 & S-293.
3. For additional notes, see Det. No. S-122 & S-272.

TITLE	BOX GIRDER WEB 8422, 8522 (3/4)
STATE	LOUISIANA
DEPARTMENT	DEPARTMENT OF TRANSPORTATION AND DEVELOPMENT
OFFICE	OFFICE OF HIGHWAYS
PROJECT	STATE PROJECT NO. 100-100-100
DESIGNER	MISSISSIPPI STATE ENGINEERING CO.
CONTRACTOR	WILLIAMS ENGINEERING CO., INC.
FABRICATOR	ISHIKAWA HAMA HARITA STEEL SUPPLIES CO.
MANAGER	WILLIAMS ENGINEERING CO., INC.
DATE	5-27-51
SCALE	5'-1"=1'-0"
DRAWN BY	K. Williams

NO.	DATE	DESCRIPTION	BY

5" Max. Spacing (Flange & Stiffener)  
 TOP FLANGE 2-1/2" x 7-0" (OVER 200%)  
 BOTTOM FLANGE 2-1/2" x 7-0" (OVER 200%)  
 154-N18 1" x 5" A136

5" Max. Spacing (Flange & Stiffener)  
 TOP FLANGE 2-1/2" x 7-0" (OVER 200%)  
 BOTTOM FLANGE 2-1/2" x 7-0" (OVER 200%)  
 154-N18 1" x 5" A136

5" Max. Spacing (Flange & Stiffener)  
 TOP FLANGE 2-1/2" x 7-0" (OVER 200%)  
 BOTTOM FLANGE 2-1/2" x 7-0" (OVER 200%)  
 154-N18 1" x 5" A136

5" Max. Spacing (Flange & Stiffener)  
 TOP FLANGE 2-1/2" x 7-0" (OVER 200%)  
 BOTTOM FLANGE 2-1/2" x 7-0" (OVER 200%)  
 154-N18 1" x 5" A136

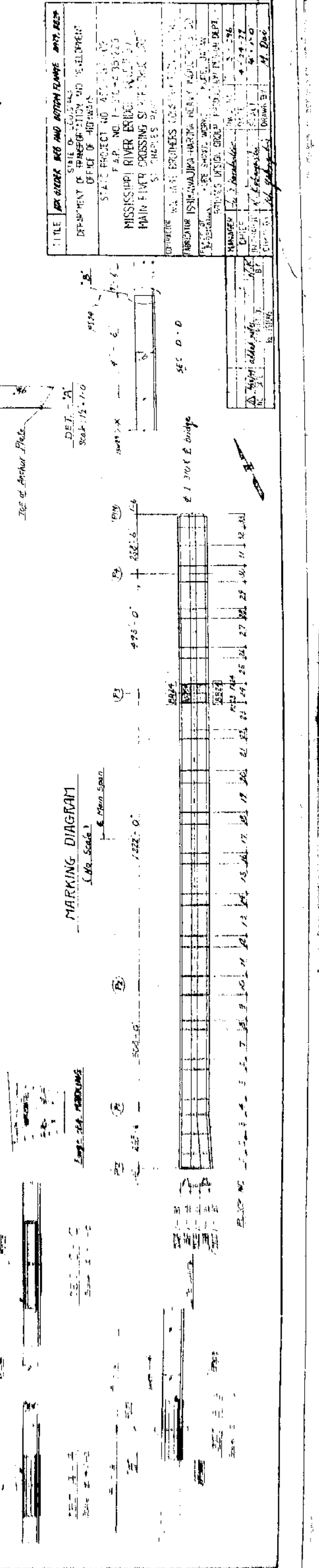
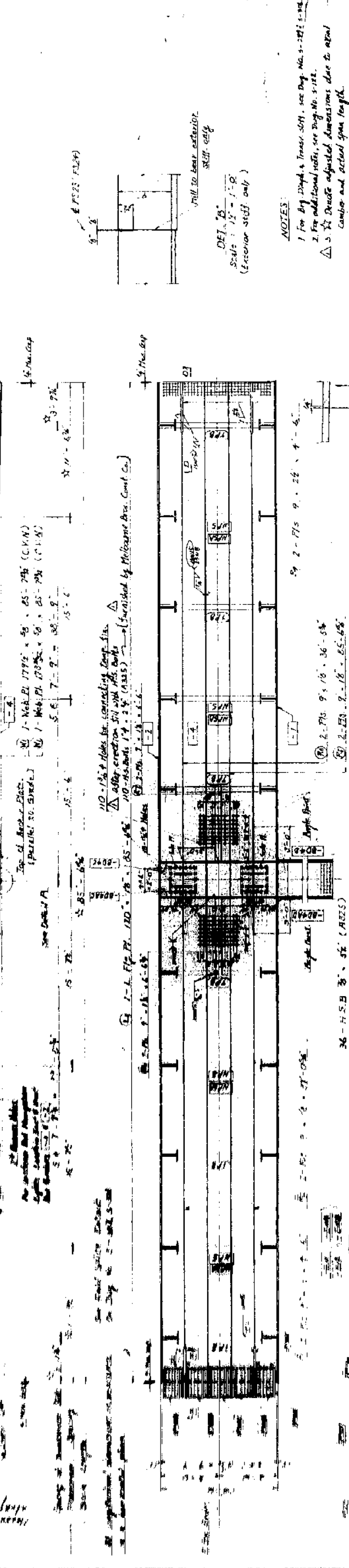
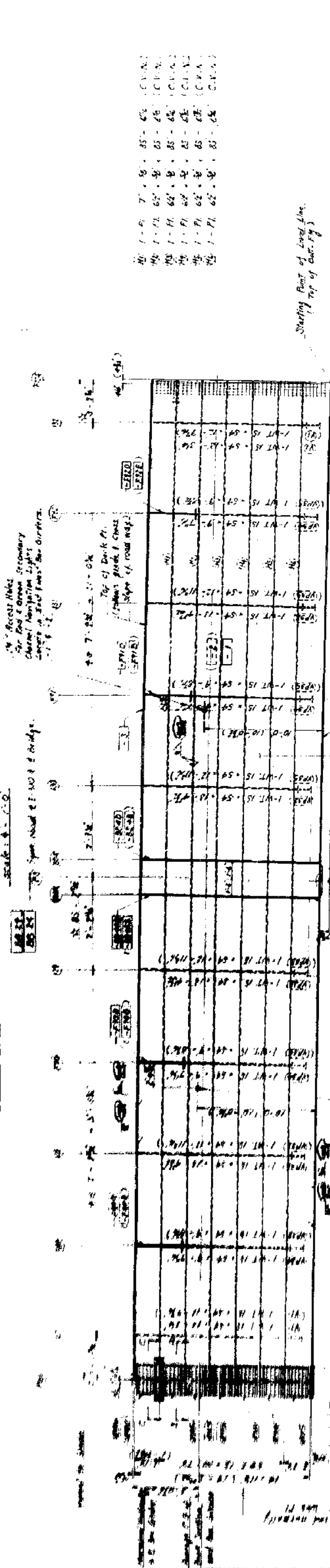
154-N18 5" x 24" A136

SEC. I-I  
(See Det. No. S-292)



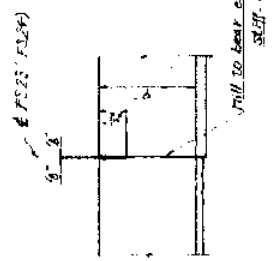
BOX GIRDER, WEB AND BOTTOM FLANG. B&B 24

296



40	1-9	7	8	85	62	C.P.A.
41	1-11	62	8	85	62	C.P.A.
42	1-11	62	8	85	62	C.P.A.
43	1-11	62	8	85	62	C.P.A.
44	1-11	62	8	85	62	C.P.A.
45	1-11	62	8	85	62	C.P.A.
46	1-11	62	8	85	62	C.P.A.

Starting Point of Level Line  
(Top of Cur. Fg.)



DEF. B.  
Scale: 1/2" = 1'-0"  
(Excavator stiff only)

NOTES:

- 1 For Big Drop & Inner stiff, see Day No. 2-272 & 2-273
- 2 For additional notes, see Day No. 5-112.
- 3  $\Delta$   $\frac{1}{2}$  Double adjusted dimensions due to actual camber and actual span length.

TITLE	BOX GIRDER, WEB AND BOTTOM FLANG. B&B 24
STATE OF MISSISSIPPI	
DEPARTMENT OF TRANSPORTATION AND DEVELOPMENT	
OFFICE OF HIGHWAYS	
STATE PROJECT NO.	44-1-10
F.A.P. NO.	1-10-2-25-223
MISSISSIPPI RIVER BRIDGE	
MAIN PIER CROSSING	
CONTRACT NO.	51-THURLES
DESIGNED BY	W. J. B. BROWN
CHECKED BY	W. J. B. BROWN
DATE	4-27-27
SCALE	1/2" = 1'-0"
DRAWN BY	M. D. D.











