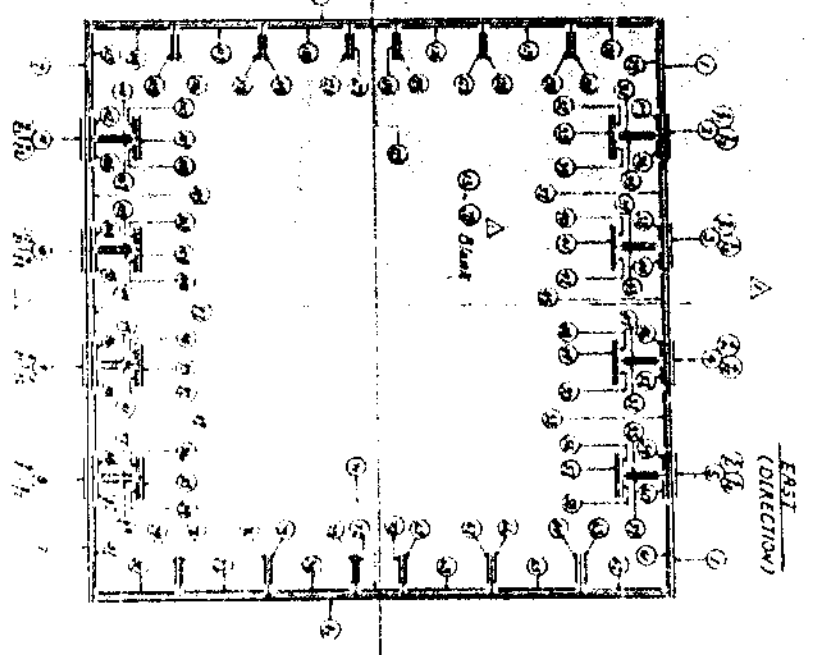
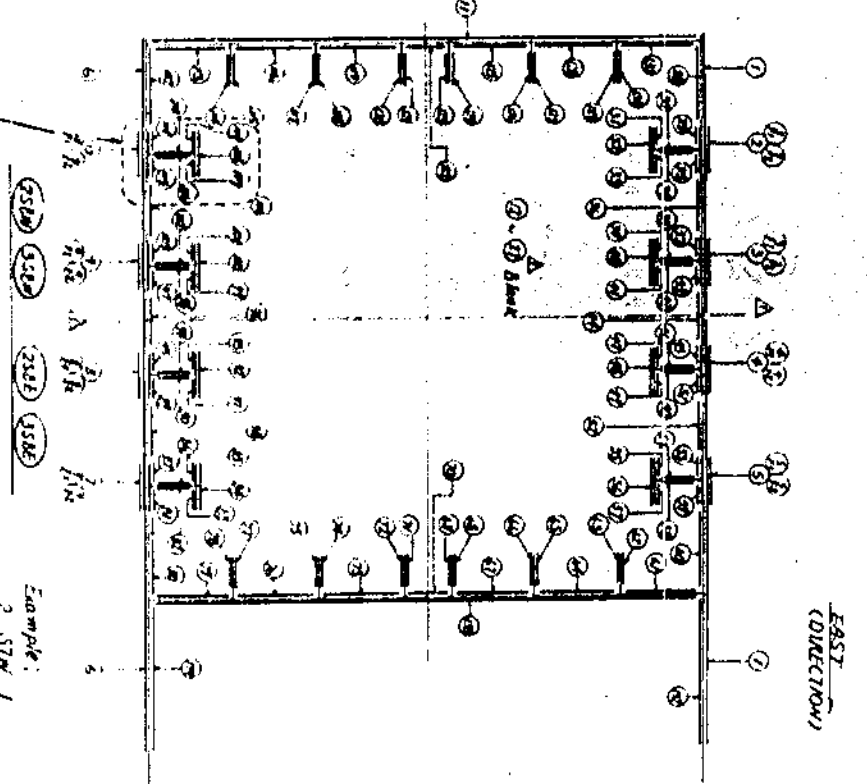


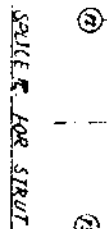
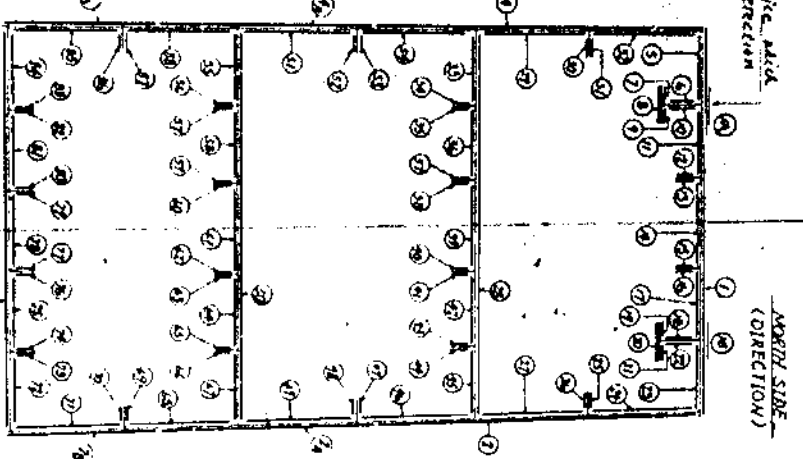
NORTH SIDE
(DIRECTION)



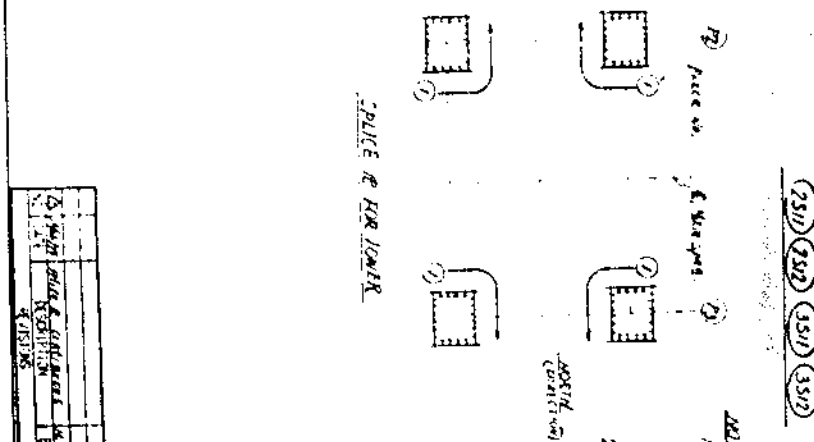
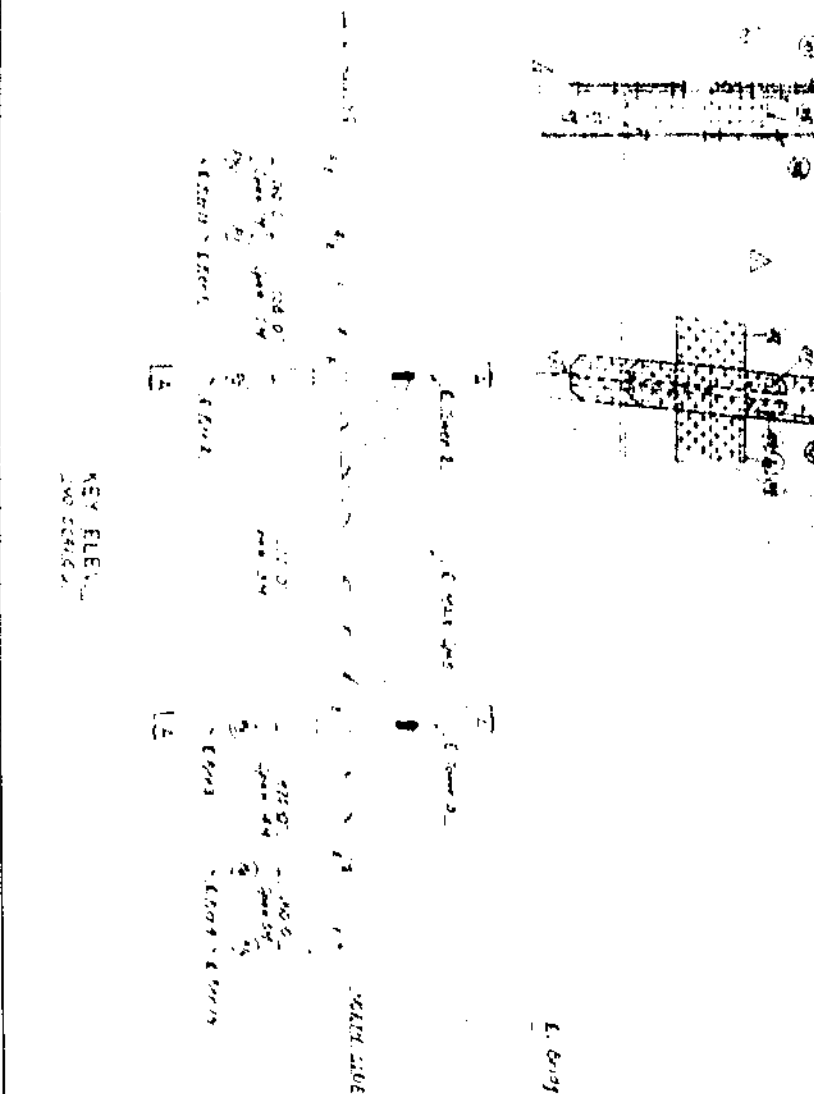
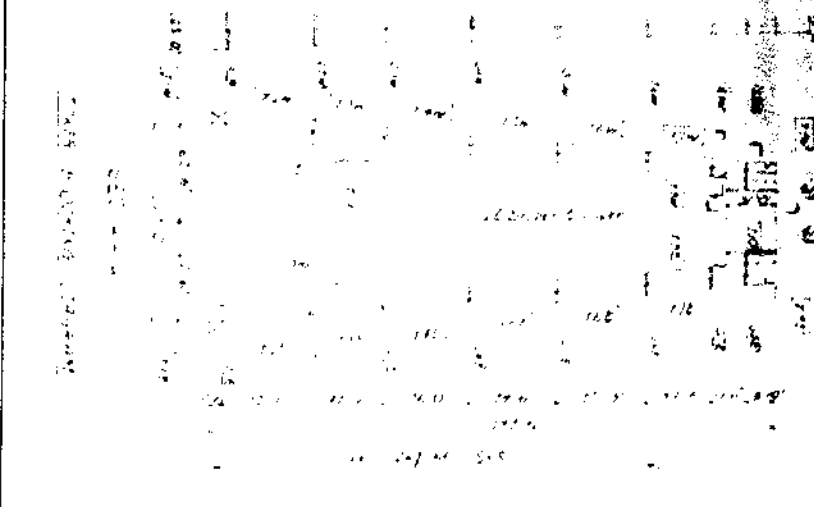
NORTH SIDE
(DIRECTION)



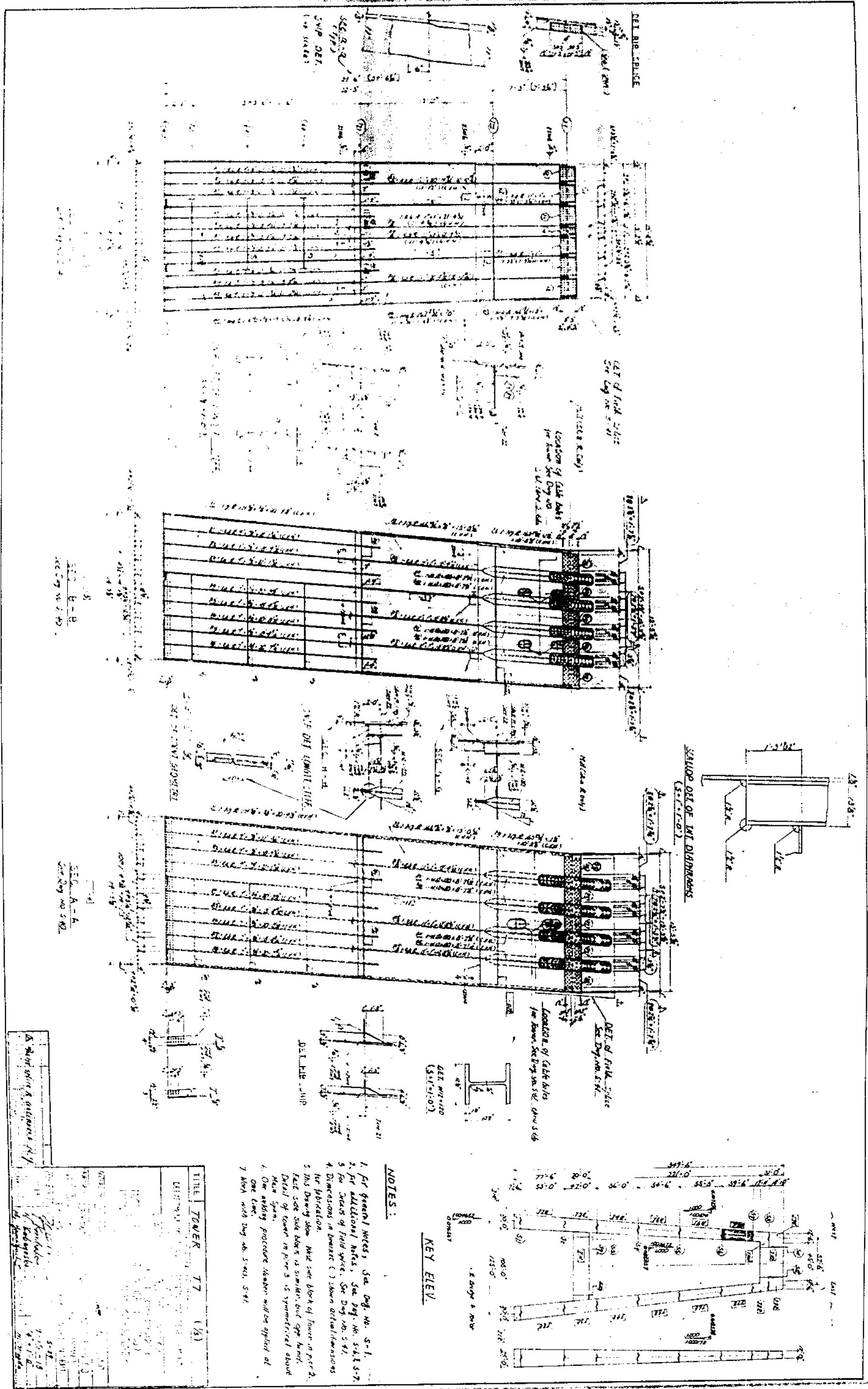
UPPER
(DIRECTION)



NORTH
(DIRECTION)



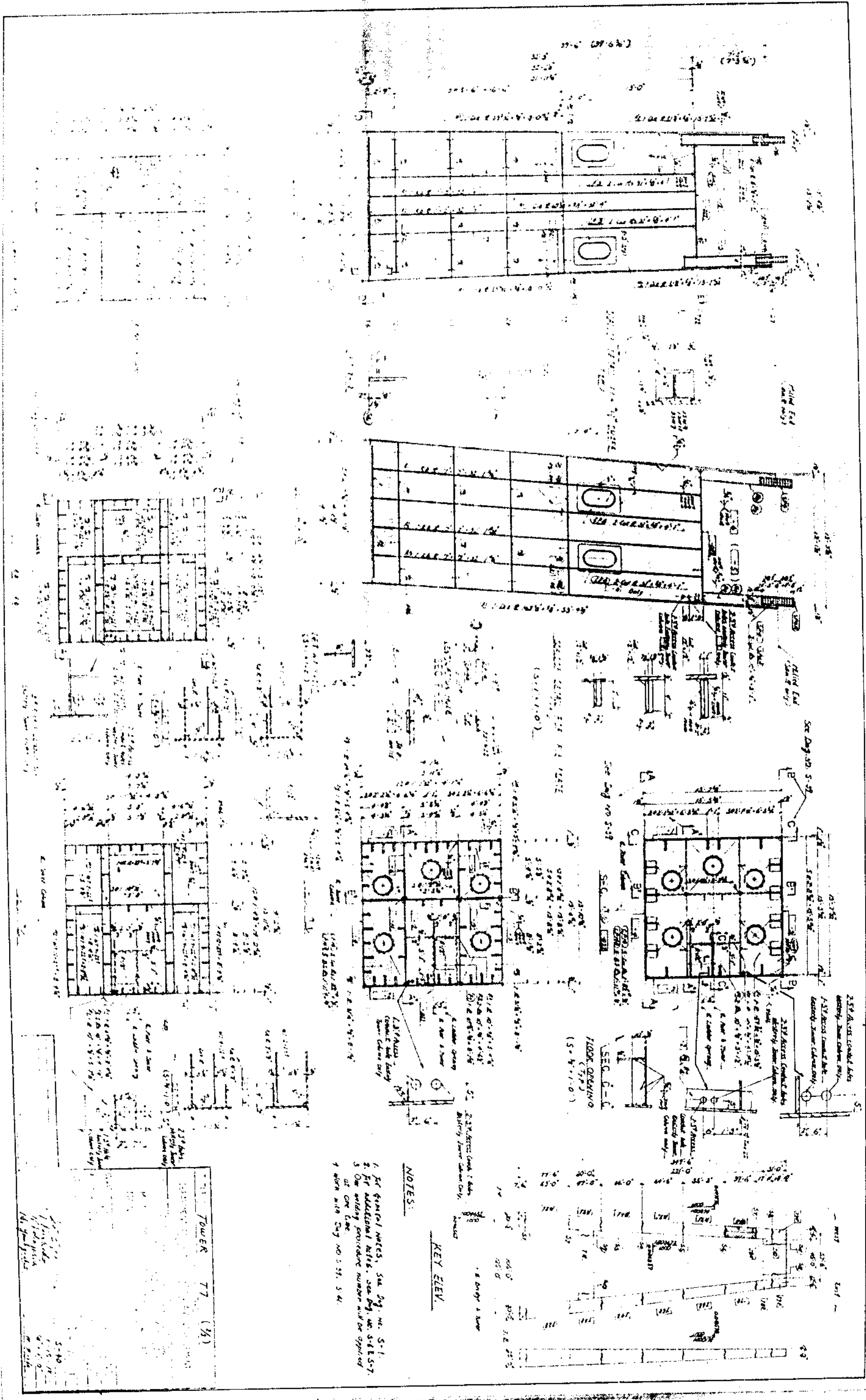
TITLE TOWER BLOWING DIAGRAM (2/3) STATE OF LOUISIANA DEPARTMENT OF TRANSPORTATION AND DEVELOPMENT OFFICE OF HIGHWAYS	
STATE PROJECT NO. 450-31-02 F.A.R. NO. 1-200-4051923 MISSISSIPPI RIVER SERVICE DIST. 1501 MAIN RIVER CHANNEL, ST. CHARLES, MISSOURI ST. CHARLES, MISSOURI	
ARCHITECT WILLIAMS BROTHERS ARCHITECTURE CO., INC. 1501 MAIN STREET, ST. CHARLES, MISSOURI 63301 ENGINEER HERRING ENGINEERING COMPANY 1001 PINE STREET, ST. LOUIS, MISSOURI 63101	
DRAWN BY: [Name] CHECKED BY: [Name]	DATE: [Date] SCALE: [Scale]



NOTES:

1. For general notes, see Eng. No. 5-1.
2. For additional notes, see Eng. No. 5-4, 5-7.
3. For details of field joints, see Eng. No. 5-11.
4. Dimensions in brackets () show actual dimensions for fabrication.
5. This drawing shows the size block of form in place. Each side side block is similar, but opposite.
6. Detail of tower in pier is symmetrical about main span.
7. One adding procedure number will be applied at 7' from with Eng. No. 5-40, 5-41.

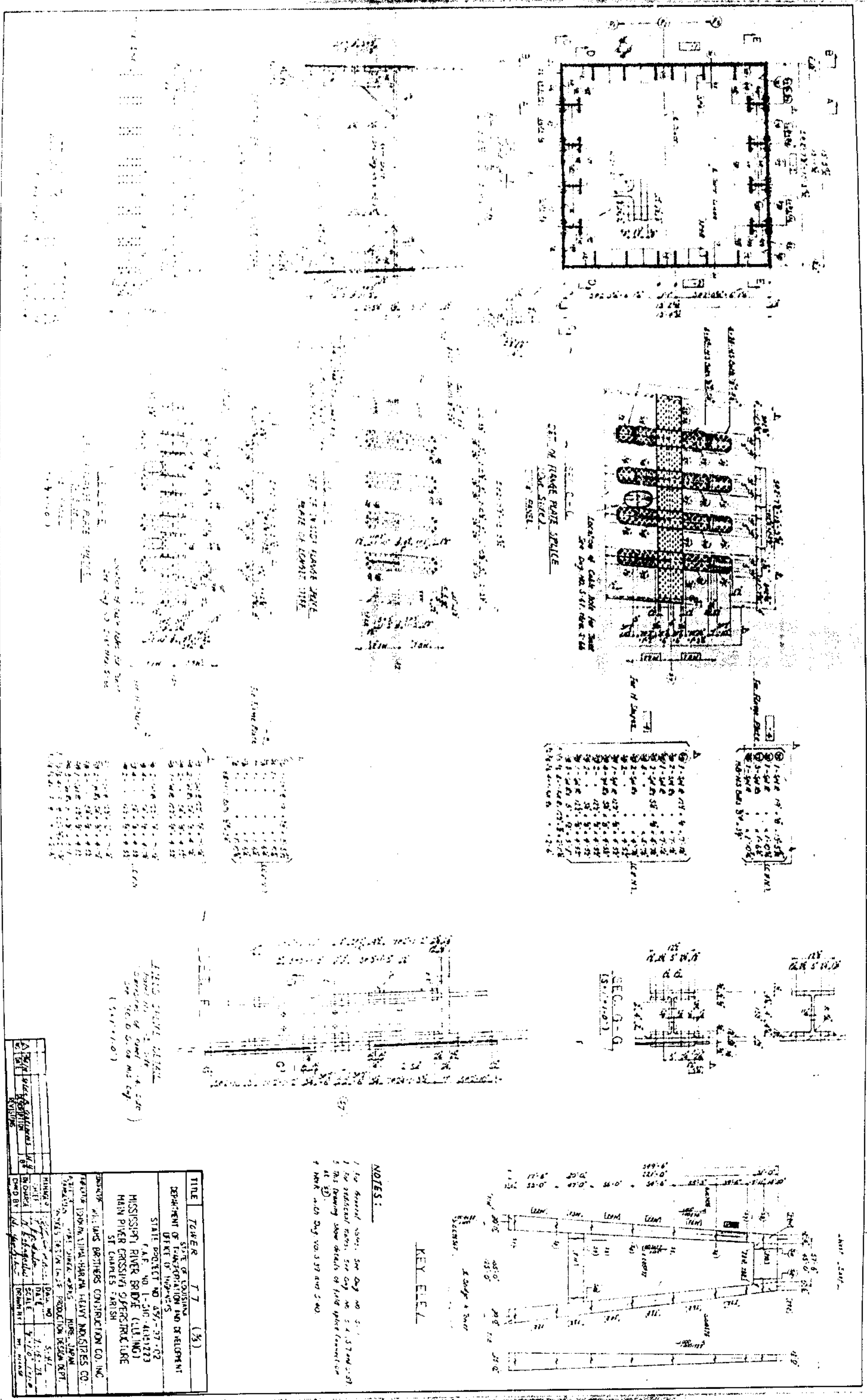
TITLE	TOWER	77	(1/5)
DATE	1-15-18		
BY	J. H. B.		
CHECKED	J. H. B.		
APPROVED	J. H. B.		
SCALE	AS SHOWN		



- NOTES:**
1. For general notes, see Day No. 5-1.
 2. For additional notes, see Day No. 5-6 & 5-7.
 3. On welding procedure number will be specified at one time.
 4. When with Day No. 5-21, 5-41.

KEY ELEV.

TOWER	77	(1/4)
DATE	1/15/57	
BY	W. J. ...	
CHECKED	...	
SCALE	1/4" = 1'-0"	



1	2	3	4	5	6	7	8	9	10	11	12	13	14	15	16	17	18	19	20	21	22	23	24	25	26	27	28	29	30	31	32	33	34	35	36	37	38	39	40	41	42	43	44	45	46	47	48	49	50	51	52	53	54	55	56	57	58	59	60	61	62	63	64	65	66	67	68	69	70	71	72	73	74	75	76	77	78	79	80	81	82	83	84	85	86	87	88	89	90	91	92	93	94	95	96	97	98	99	100
---	---	---	---	---	---	---	---	---	----	----	----	----	----	----	----	----	----	----	----	----	----	----	----	----	----	----	----	----	----	----	----	----	----	----	----	----	----	----	----	----	----	----	----	----	----	----	----	----	----	----	----	----	----	----	----	----	----	----	----	----	----	----	----	----	----	----	----	----	----	----	----	----	----	----	----	----	----	----	----	----	----	----	----	----	----	----	----	----	----	----	----	----	----	----	----	----	----	----	-----

NOTES:
 1 For general notes, see Day no. 5.
 2 For additional notes, see Day no. 5, 4, 3, 2 and 1.
 3 This drawing shows details of first upper construction at 3D.
 4 Mark with Day no. 3, 2 and 1.

TITLE	TOWER	SCALE	1/4" = 1'-0"
PROJECT	STATE PROJECT NO. 497-27-02		
CLIENT	MISSISSIPPI RIVER BRIDGE (LLINOIS)		
DESIGNER	WILLIAMS BROTHERS CONSTRUCTION CO., INC.		
CONTRACTOR	WILLIAMS BROTHERS CONSTRUCTION CO., INC.		
DATE	1-15-28		
SCALE	3/16" = 1'-0"		
BY	W. Williams		
CHECKED BY	W. Williams		

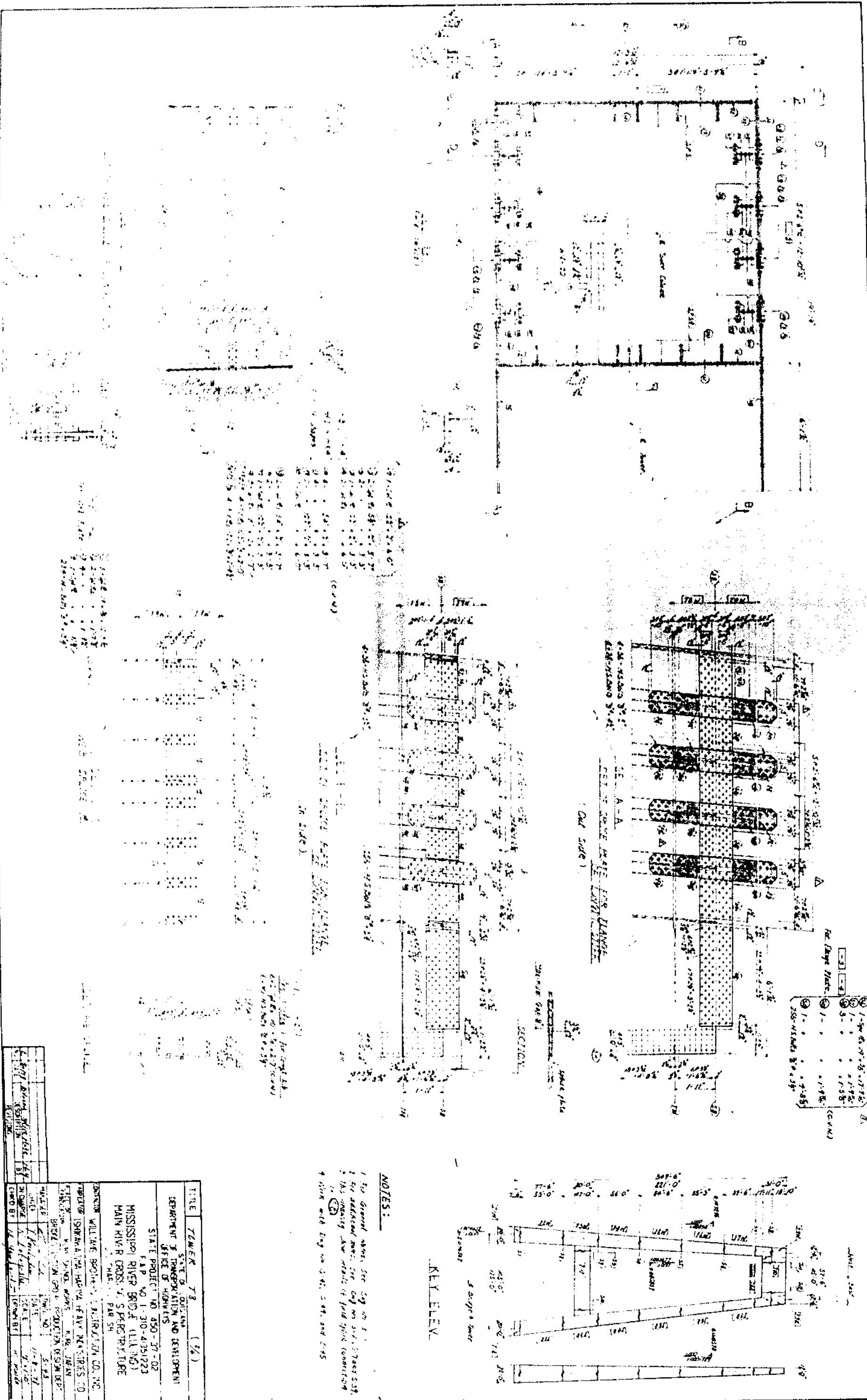


CONTRACT OF SALE AND
 DEED OF CONVEYANCE
 FOR THE LANDS
 IN THE PARISH OF
 ORLEANS, STATE
 OF LOUISIANA

NOTES:

1. The tower shown on the plan is 100 feet high and 10 feet wide.
2. The tower is to be built of brick.
3. The tower is to be built on a concrete foundation.
4. The tower is to be built on a lot 100 feet wide and 100 feet deep.
5. The tower is to be built on a lot 100 feet wide and 100 feet deep.
6. The tower is to be built on a lot 100 feet wide and 100 feet deep.
7. The tower is to be built on a lot 100 feet wide and 100 feet deep.

TITLE	TOWER	1/2
STATE OF LOUISIANA		
DEPARTMENT OF TRANSPORTATION AND DEVELOPMENT		
OFFICE OF HIGHWAYS		
STATE PROJECT NO. 450-37-102		
PARISH OF ORLEANS		
SECTION 10		
CONTRACT NO. 100-100-100		
DATE	11-8-18	
SCALE	1" = 10'	
DESIGNED BY	J. H. HARRIS	
CHECKED BY	J. H. HARRIS	

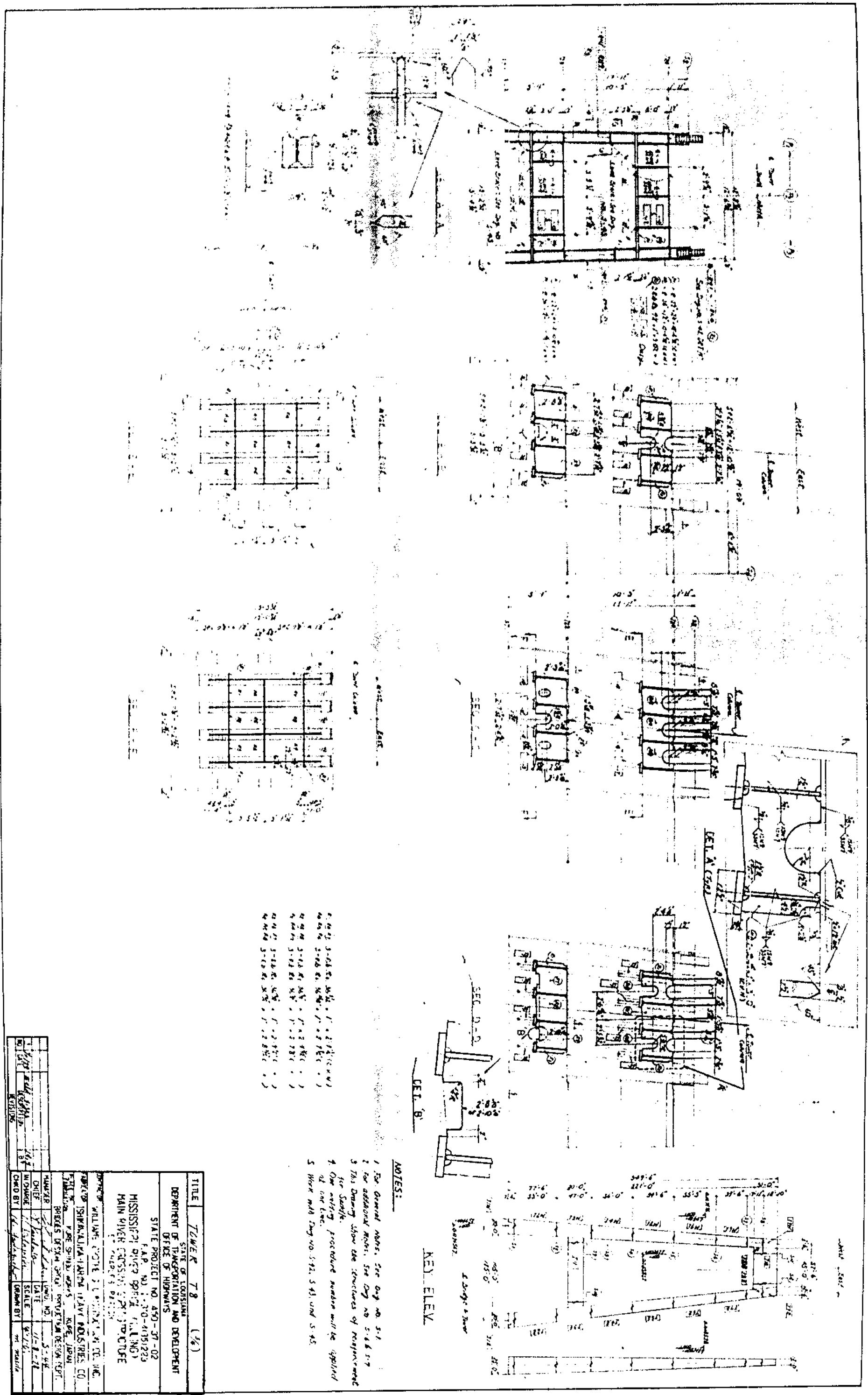


1. 2'-0" x 2'-0" x 2'-0" (CONC)
 2. 2'-0" x 2'-0" x 2'-0" (CONC)
 3. 2'-0" x 2'-0" x 2'-0" (CONC)
 4. 2'-0" x 2'-0" x 2'-0" (CONC)
 5. 2'-0" x 2'-0" x 2'-0" (CONC)
 6. 2'-0" x 2'-0" x 2'-0" (CONC)
 7. 2'-0" x 2'-0" x 2'-0" (CONC)
 8. 2'-0" x 2'-0" x 2'-0" (CONC)
 9. 2'-0" x 2'-0" x 2'-0" (CONC)
 10. 2'-0" x 2'-0" x 2'-0" (CONC)

NOTES:
 1. For ground elev. see log on 1.
 2. For additional notes, see log on 1.
 3. This drawing shows details of final grade construction.
 4. Work with log on 1, 2, 3, 4, and 5.

TITLE	TOWER 78 (1/2)
STATE OF	LOUISIANA
DEPARTMENT OF	TRANSPORTATION AND DEVELOPMENT
OFFICE OF	HIGHWAYS
STATE PROJECT NO.	450-37-02
F.A.P. NO.	1-310-4351223
MISSISSIPPI RIVER BRIDGE (ILLINOIS)	
MAIN RIVER CROSS - 1/5 PERCENTURE	
DESIGNED BY	WILLIAM BROOKS & ASSOCIATES CO., INC.
ENGINEER	ISMAEL ALBA HERRERA, PE
STATE ENGINEER	W. R. JAMES
DATE	11-8-71
SCALE	1/4" = 1'-0"
BY	W. R. JAMES
CHECKED BY	W. R. JAMES
APPROVED BY	W. R. JAMES

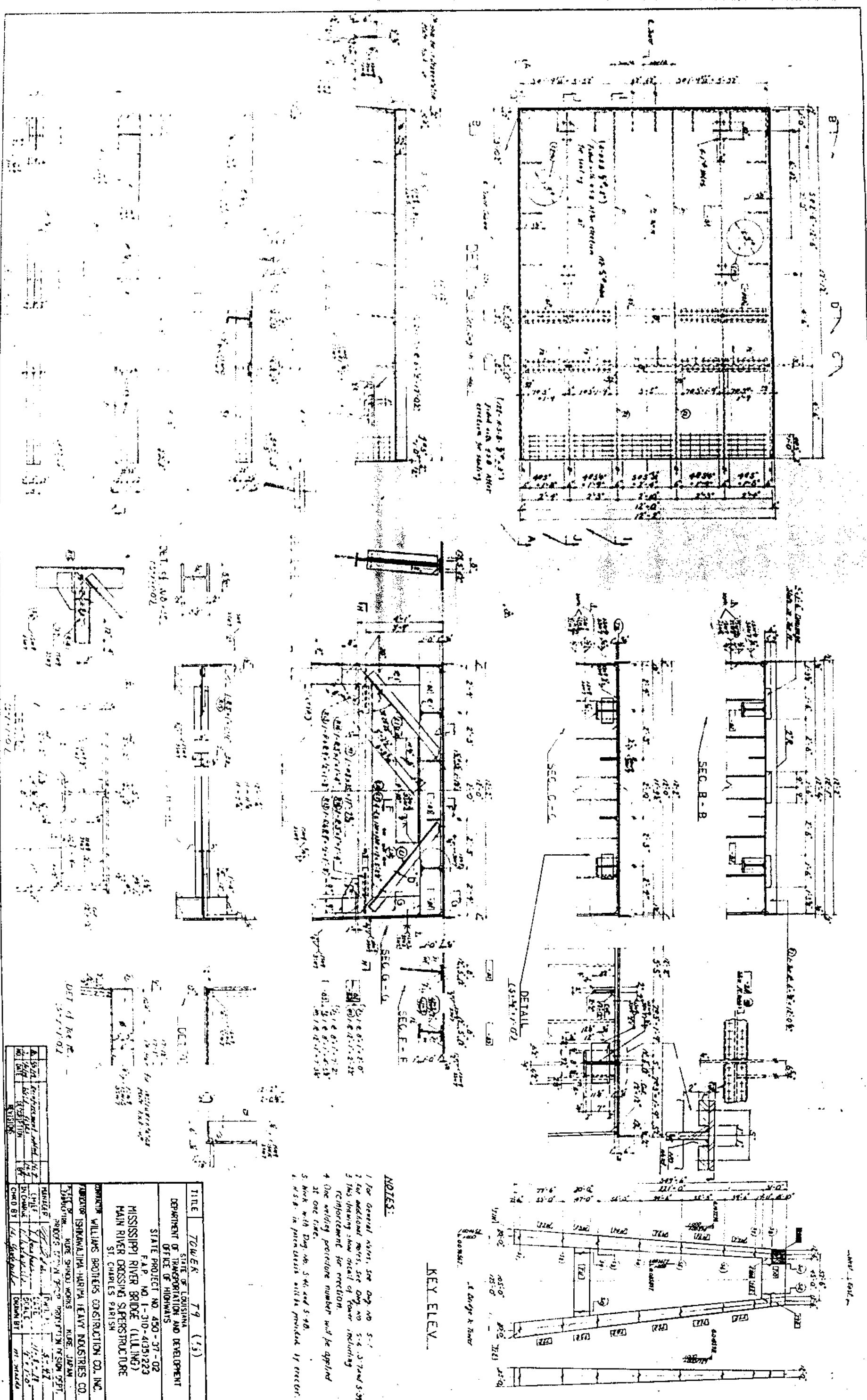
SHOP DRAWINGS



0-00	3'-00"	36 1/2"	1'-0"	2'-0"	1'-0"
0-01	3'-00"	36 1/2"	1'-0"	2'-0"	1'-0"
0-02	3'-00"	36 1/2"	1'-0"	2'-0"	1'-0"
0-03	3'-00"	36 1/2"	1'-0"	2'-0"	1'-0"
0-04	3'-00"	36 1/2"	1'-0"	2'-0"	1'-0"
0-05	3'-00"	36 1/2"	1'-0"	2'-0"	1'-0"
0-06	3'-00"	36 1/2"	1'-0"	2'-0"	1'-0"
0-07	3'-00"	36 1/2"	1'-0"	2'-0"	1'-0"
0-08	3'-00"	36 1/2"	1'-0"	2'-0"	1'-0"
0-09	3'-00"	36 1/2"	1'-0"	2'-0"	1'-0"
0-10	3'-00"	36 1/2"	1'-0"	2'-0"	1'-0"

- NOTES:**
- 1 See General Notes, See Day no. 5-1
 - 2 See additional notes, See Day no. 5-6 & 5-7
 - 3 This Drawing show the structures of requirements for Sample.
 - 4 One writing procedure number will be applied at our time.
 - 5 Work with Day no. 5-12, 5-13, and 5-15.

TITLE		TOWER T-8 (1/2)	
STATE OF LOUISIANA		STATE OF LOUISIANA	
DEPARTMENT OF INCORPORATION AND DEVELOPMENT		DEPARTMENT OF INCORPORATION AND DEVELOPMENT	
OFFICE OF HIGHWAYS		OFFICE OF HIGHWAYS	
STATE PROJECT NO. 450-37-02		STATE PROJECT NO. 450-37-02	
F.A.P. NO. 1-30-4131223		F.A.P. NO. 1-30-4131223	
MISSISSIPPI RIVER CROSSING PROJECT (L.L.N.G.)		MISSISSIPPI RIVER CROSSING PROJECT (L.L.N.G.)	
MAIN RIVER CROSSING STRUCTURE		MAIN RIVER CROSSING STRUCTURE	
DESIGNED BY		WILLIAM W. COLE, P.E., ARCHT. & ENGR.	
DRAWN BY		SHAWNAHAWANDA HAVY ROOSTERS, CO.	
CHECKED BY		KARE SWISS, ARCHT.	
DATE		NOVEMBER 1950	
SCALE		AS SHOWN	
PROJECT NO.		450-37-02	
DATE		5-4-51	
DRAWN BY		J. H. HARRIS	
CHECKED BY		W. HARRIS	

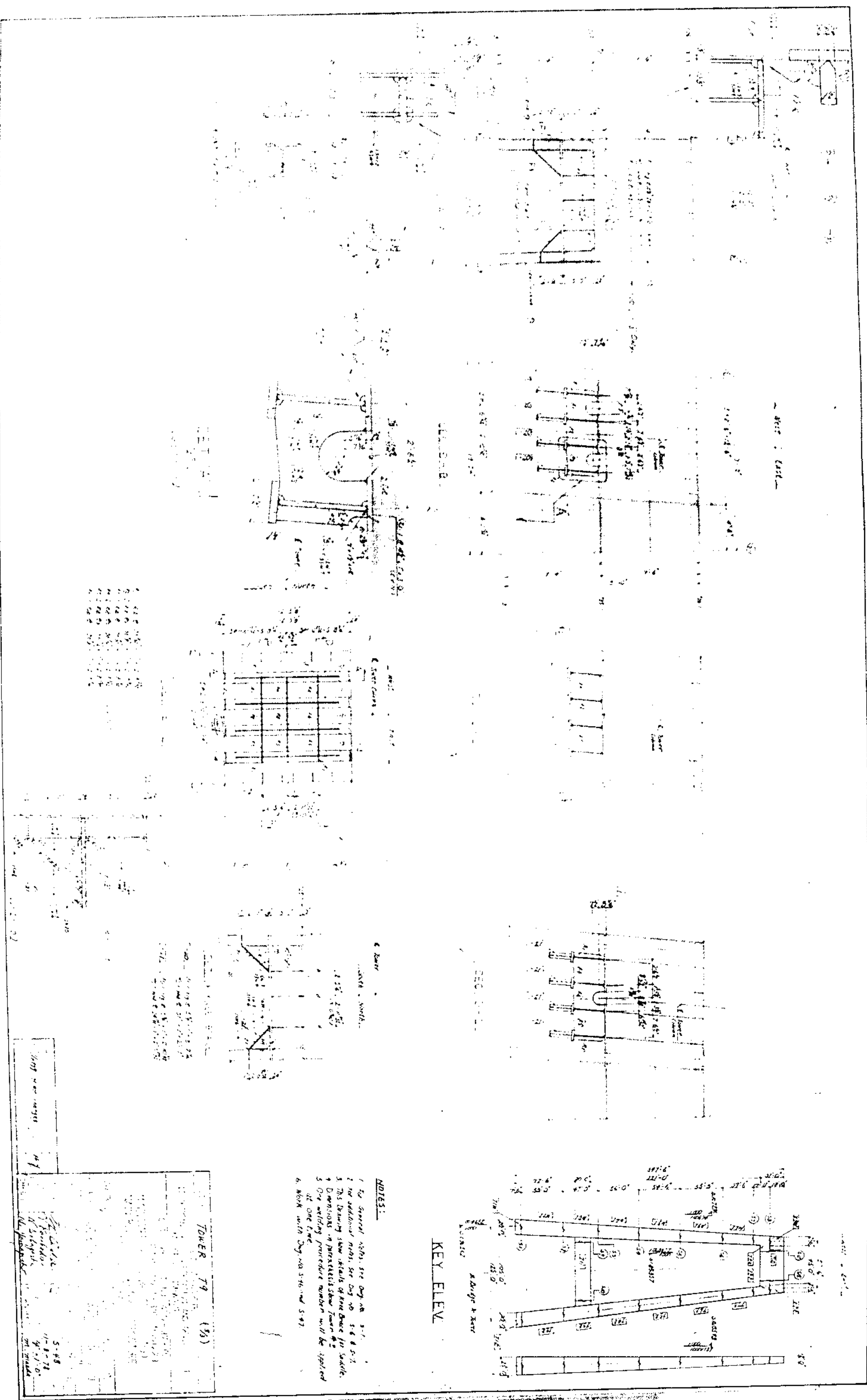


NOTES:

- 1 For general notes, see Day no. 5-1
- 2 For additional notes, see Day no. 5-4, 5-7 and 5-8
- 3 This drawing shows detail of tower including reinforcement for erection.
- 4 One welding procedure number will be applied at one time.
- 5 Work with Day no. 5-4 and 5-8.
- 6 W.S.B. in parenthesis within provided by erector.

KEY ELEV.

TITLE		TOWER T9 (15)	
STATE OF LOUISIANA		DEPARTMENT OF TRANSPORTATION AND DEVELOPMENT	
OFFICE OF HIGHWAYS		STATE PROJECT NO. 450-37-02	
F.A.P. NO. 1-310-4031223		MISSISSIPPI RIVER BRIDGE (ILLINOIS)	
ST. CHARLES PARISH		MAIN RIVER CROSSING SUPERSTRUCTURE	
CONTRACTOR WILLIAMS BROTHERS CONSTRUCTION CO., INC.		DESIGNER SHIKAMAJIYA-HARITA HEAVY INDUSTRIES CO.	
MADE SHINDO WORKS KURE, JAPAN		REVISOR'S NAME AND POSITION	
DATE		SCALE	
APPROVED BY		DRAWN BY	



- 1. 1/2" x 1/2" x 1/2" x 1/2"
- 2. 1/2" x 1/2" x 1/2" x 1/2"
- 3. 1/2" x 1/2" x 1/2" x 1/2"
- 4. 1/2" x 1/2" x 1/2" x 1/2"
- 5. 1/2" x 1/2" x 1/2" x 1/2"
- 6. 1/2" x 1/2" x 1/2" x 1/2"
- 7. 1/2" x 1/2" x 1/2" x 1/2"
- 8. 1/2" x 1/2" x 1/2" x 1/2"
- 9. 1/2" x 1/2" x 1/2" x 1/2"
- 10. 1/2" x 1/2" x 1/2" x 1/2"

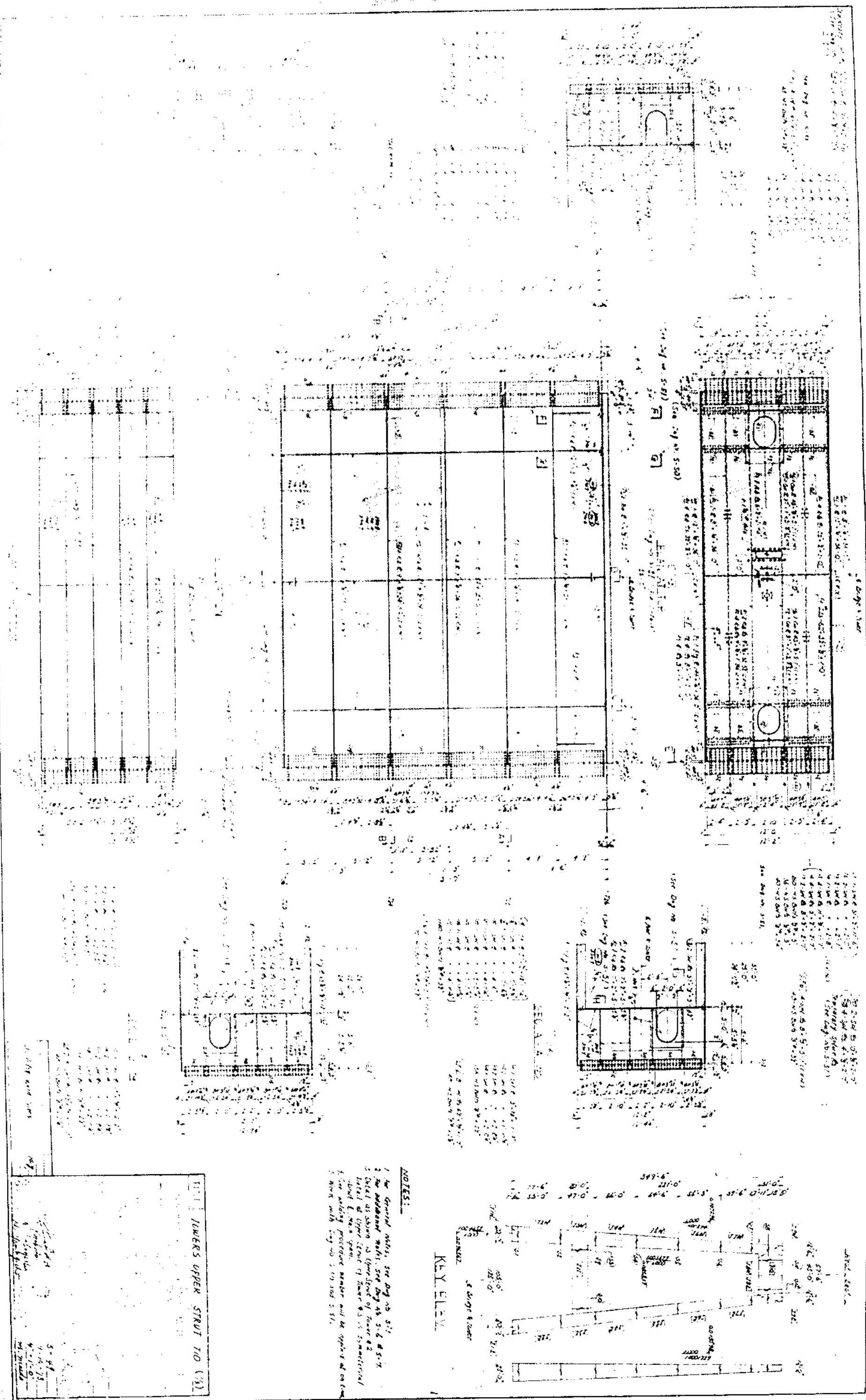
NOTES:

1. For general notes, see Day no. 5-1.
2. For additional notes, see Day no. 5-6 & 5-7.
3. This drawing shows details of some items for saddle.
4. Dimensions in parentheses show Tower No. 1.
5. On welding procedure number will be applied at one time.
6. Work with Day no. 5-16 and 5-17.

TOWER T9 (1/2)

5-48
11-8-78
W. J. D.
M. J. D.

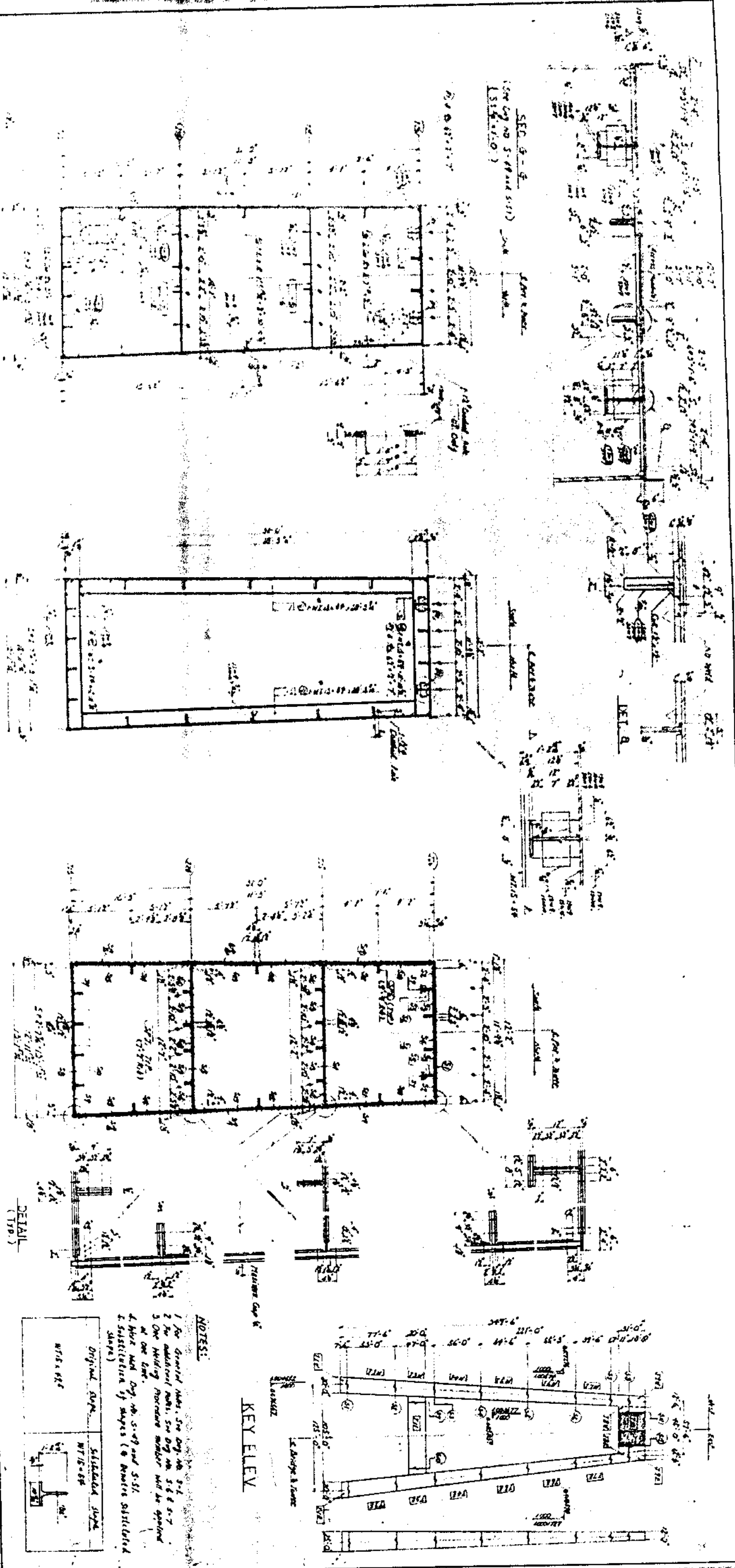
1/2" x 1/2" x 1/2" x 1/2"
1/2" x 1/2" x 1/2" x 1/2"
1/2" x 1/2" x 1/2" x 1/2"
1/2" x 1/2" x 1/2" x 1/2"
1/2" x 1/2" x 1/2" x 1/2"
1/2" x 1/2" x 1/2" x 1/2"
1/2" x 1/2" x 1/2" x 1/2"
1/2" x 1/2" x 1/2" x 1/2"
1/2" x 1/2" x 1/2" x 1/2"
1/2" x 1/2" x 1/2" x 1/2"



- NOTES:**
1. See General Notes, see Day no 5/1
 2. See additional notes, see Day no 5-6 & 5-7
 3. Detail as shown is typical of lower 42
 4. Detail at upper level of lower 42 is 5 structural
 5. See working procedure number and be right of on form
 6. Work with Day no 5/1 and 5/1/1

LOWERS UPPER STORY (1/2)

5-1/1
 5-1/2
 5-1/3
 5-1/4
 5-1/5



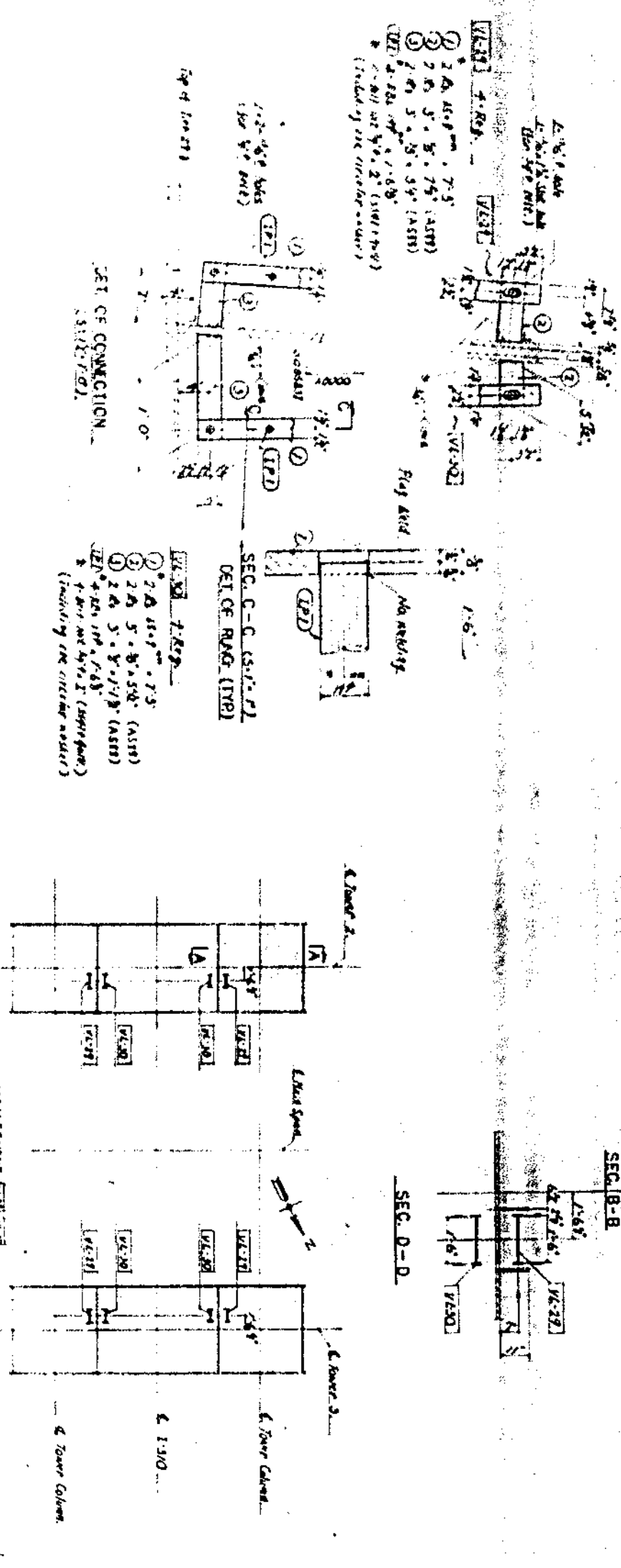
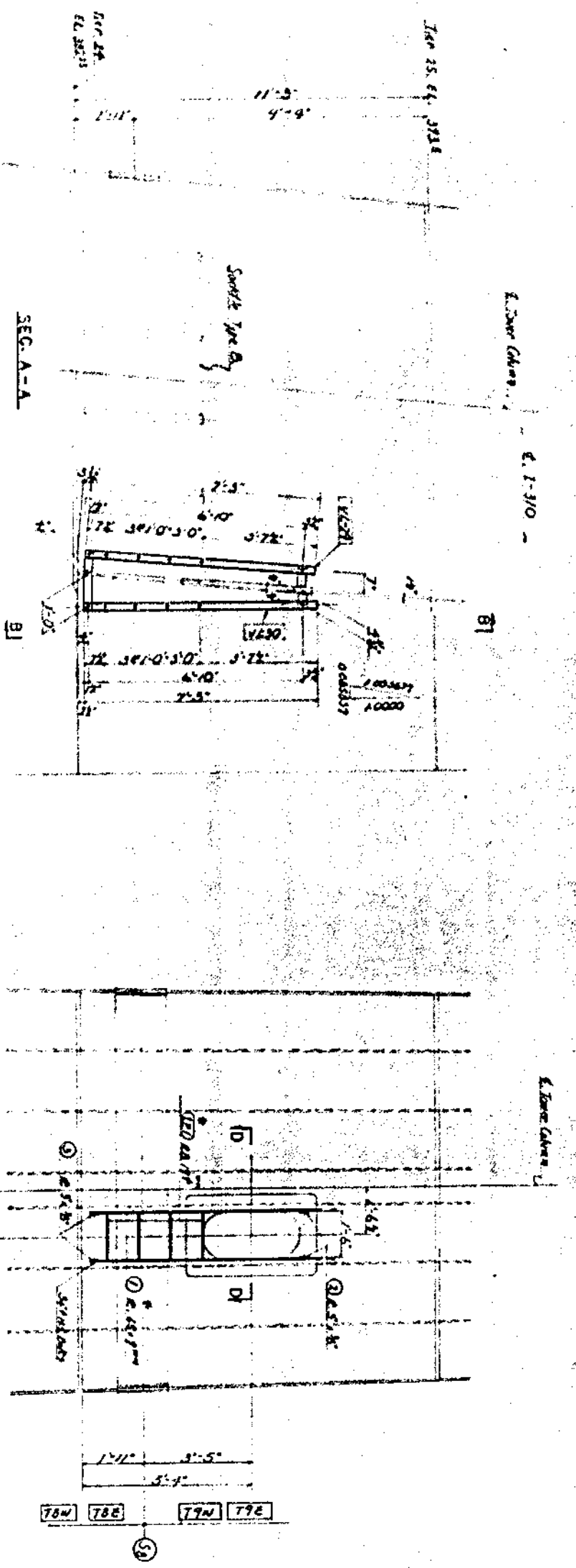
NOTE:

1. For detailed notes, see Day no. 5-171 & 5-172
2. For additional notes, see Day no. 5-171 & 5-172
3. One building number will be applied at one time.
4. When used, Day no. 5-171 and 5-172.
5. Substitution of shapes (to provide additional shapes)

Original shape	Standard shape
W18x45	W18x45

DATE	7-15-71
BY	W. J. H. H.
CHECKED	W. J. H. H.
APPROVED	W. J. H. H.
DESIGNED	W. J. H. H.
DRAWN	W. J. H. H.
CHECKED	W. J. H. H.
APPROVED	W. J. H. H.

MISSISSIPPI RIVER BRIDGE (171) (172)
MISSISSIPPI RIVER CROSS NO. 5-171 (172)
31 CHANNELS PROVIDED



NOTES:

1. For general notes, see page no. S-1.
2. All materials used for ladders shall conform to ASTM-A36, and shall be primed after fabrication, according to ASTM-A153, unless otherwise noted.
3. The welding shall be of quality which is known according to HELIXING BROTHERS CONSTRUCTION CO'S drawing sheet no. 872.
4. Substitution of sizes (if possible substituted sizes)

original shape	substituted shape & size
2" x 4"	2" x 4" (ASTM-A36)
4" x 4"	4" x 4" (ASTM-A36)
4" x 8"	4" x 8" (ASTM-A36)

TITLE: LADDER DETAILS IN TOWER

STATE OF LOUISIANA
DEPARTMENT OF TRANSPORTATION AND DEVELOPMENT
OFFICE OF HIGHWAYS

STATE PROJECT NO. 450-37-02
F.A.P. NO. 1-30-402223

MISSISSIPPI RIVER BRIDGE (LULING)
MAIN RIVER CROSSING SUPERSTRUCTURE
ST. CHARLES PARISH

CONTRACTOR: WILLIAMS BROTHERS CONSTRUCTION CO., INC.
SUPERVISOR: ISHIKAWAJIMA-HARRIS HEAVY INDUSTRIES CO.
ENGINEER: WISE SHIBAZI WARD, KAGE, JAPAN
DESIGNER: BRUCE TESSIER, PRODUCTION DESIGN DEPT.
CHECKER: K. EDWARDS
DATE: 1/22-72
SCALE: 1/4" = 1'-0"

APPROVED BY: [Signature]