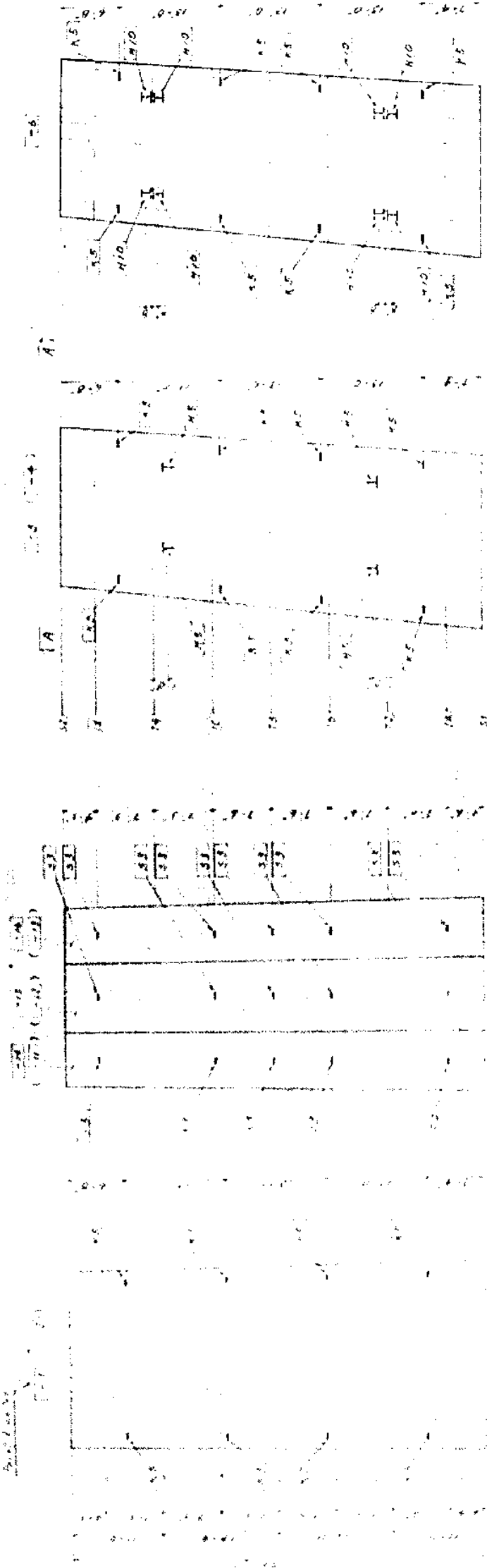


SECTION 501 - STEEL ELEVATION

SCALE: 1/4" = 1'-0"

Indicate with note number of  
bolts used and be removed and  
replaced with the correct type.



KEY: ELEV.

SEC. B-B

SEC. C-C

SEC. D-D

SEC. E-E

SECTION

SECTION

SECTION



- NOTES:
1. All material per ASTM A588.
  2. All bolting to be removed unless otherwise noted.
  3. All bolting to be used for bolting over the panel block.
  4. Bolt 7/8" dia. x 3 1/2" long, 1/2" thick, 1/2" dia. hole.

NO.	REVISIONS FOR PANEL BLOCK (TOWER 72)
1	REVISED TO SHOW THE NEW DESIGN
2	REVISED TO SHOW THE NEW DESIGN
3	REVISED TO SHOW THE NEW DESIGN
4	REVISED TO SHOW THE NEW DESIGN
5	REVISED TO SHOW THE NEW DESIGN
6	REVISED TO SHOW THE NEW DESIGN
7	REVISED TO SHOW THE NEW DESIGN
8	REVISED TO SHOW THE NEW DESIGN
9	REVISED TO SHOW THE NEW DESIGN
10	REVISED TO SHOW THE NEW DESIGN

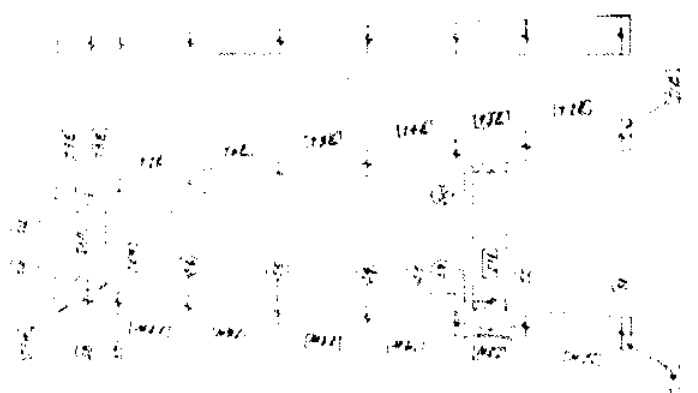
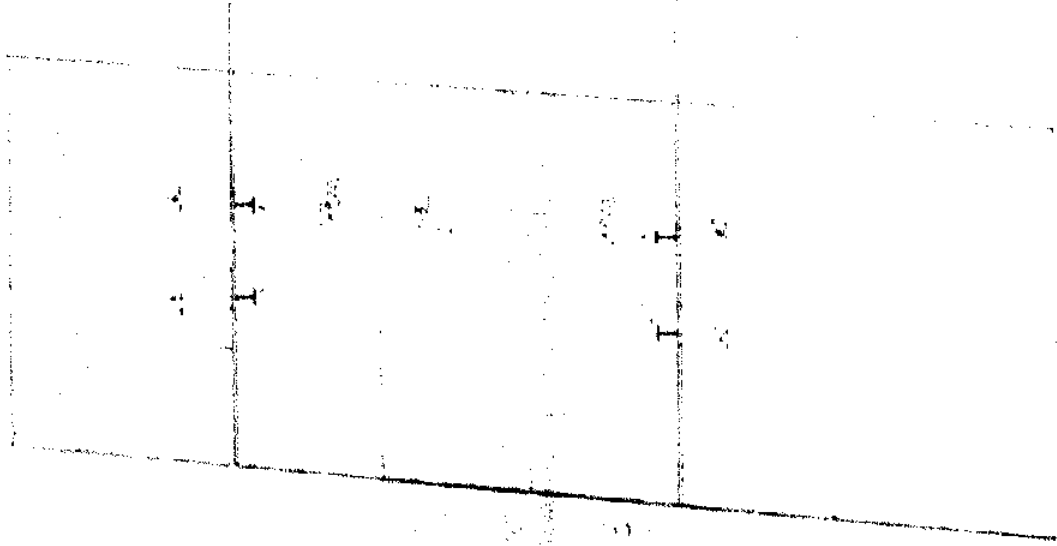
DETAILS FOR PANEL BLOCK CONNECTIONS

1. All connections shall be made in accordance with the provisions of the Building Code of the City of New York, Chapter 24, Section 24-01, and the provisions of the Building Code of the City of New York, Chapter 24, Section 24-02.



DETAIL A  
Vertical Reinforcement

DETAIL B  
Horizontal Reinforcement



KEY ELEV.

ACCESS

1. All connections shall be made in accordance with the provisions of the Building Code of the City of New York, Chapter 24, Section 24-01, and the provisions of the Building Code of the City of New York, Chapter 24, Section 24-02.

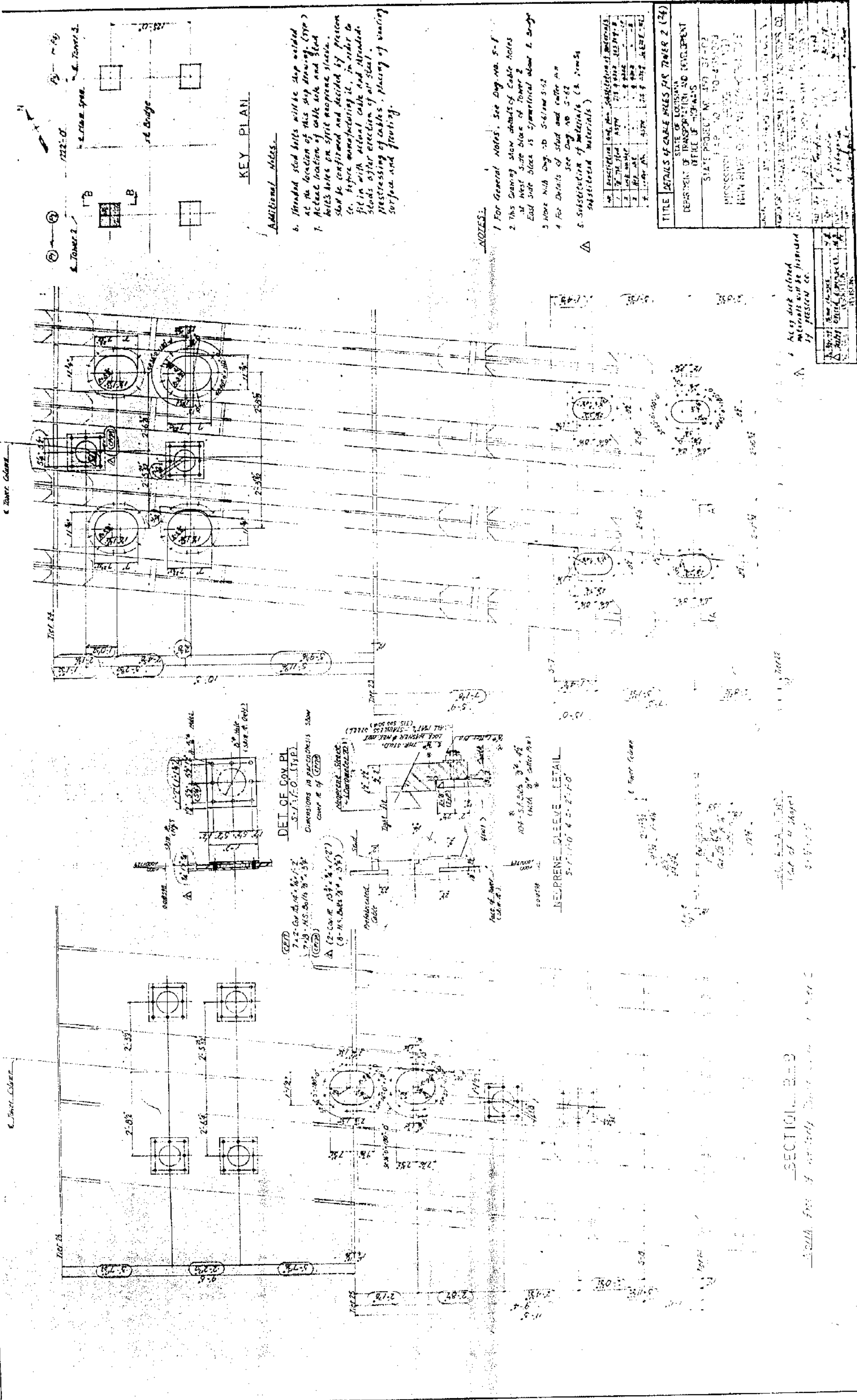
PAGES FOR PANEL BLOCK (LOWER T3) E  
 1. ALL CONNECTIONS SHALL BE MADE IN ACCORDANCE WITH THE PROVISIONS OF THE BUILDING CODE OF THE CITY OF NEW YORK, CHAPTER 24, SECTION 24-01, AND THE PROVISIONS OF THE BUILDING CODE OF THE CITY OF NEW YORK, CHAPTER 24, SECTION 24-02.  
 2. ALL CONNECTIONS SHALL BE MADE IN ACCORDANCE WITH THE PROVISIONS OF THE BUILDING CODE OF THE CITY OF NEW YORK, CHAPTER 24, SECTION 24-01, AND THE PROVISIONS OF THE BUILDING CODE OF THE CITY OF NEW YORK, CHAPTER 24, SECTION 24-02.  
 3. ALL CONNECTIONS SHALL BE MADE IN ACCORDANCE WITH THE PROVISIONS OF THE BUILDING CODE OF THE CITY OF NEW YORK, CHAPTER 24, SECTION 24-01, AND THE PROVISIONS OF THE BUILDING CODE OF THE CITY OF NEW YORK, CHAPTER 24, SECTION 24-02.  
 4. ALL CONNECTIONS SHALL BE MADE IN ACCORDANCE WITH THE PROVISIONS OF THE BUILDING CODE OF THE CITY OF NEW YORK, CHAPTER 24, SECTION 24-01, AND THE PROVISIONS OF THE BUILDING CODE OF THE CITY OF NEW YORK, CHAPTER 24, SECTION 24-02.  
 5. ALL CONNECTIONS SHALL BE MADE IN ACCORDANCE WITH THE PROVISIONS OF THE BUILDING CODE OF THE CITY OF NEW YORK, CHAPTER 24, SECTION 24-01, AND THE PROVISIONS OF THE BUILDING CODE OF THE CITY OF NEW YORK, CHAPTER 24, SECTION 24-02.











**KEY PLAN**

**Additional Notes:**

6. Stranded steel bolts will be shop welded at the location of cable hole and steel bolts holes on steel neoprene sleeve.
7. Actual location of cable hole and steel bolts holes to be confirmed and decided by person in charge manufacturing it, in order to fit in with actual cable and stranded steel after erection of air shaft.
8. Before manufacturing it, placing of marking surface and footing.

**NOTES:**

1. For General Notes, See Dwg. No. S-1
2. This Drawing show details of cable holes at West side block of Tower 2
3. East side block is symmetrical about L-bridge
4. Work with Dwg. No. S-6 Item 5-62
5. For Details of stud and collar see See Dwg. No. S-62
6. Substitution of materials (See Remarks)

NO.	DESCRIPTION	QTY.	REMARKS
1	STEEL STUD	218	4" DIA. 1/2" THICK
2	STEEL COLLAR	426	4" DIA. 1/2" THICK
3	STEEL WASH	832	4" DIA. 1/2" THICK
4	STEEL NUT	832	4" DIA. 1/2" THICK
5	STEEL WASH	832	4" DIA. 1/2" THICK
6	STEEL NUT	832	4" DIA. 1/2" THICK

**TITLE** DETAILS OF CABLE HOLES FOR TOWER 2 (26)

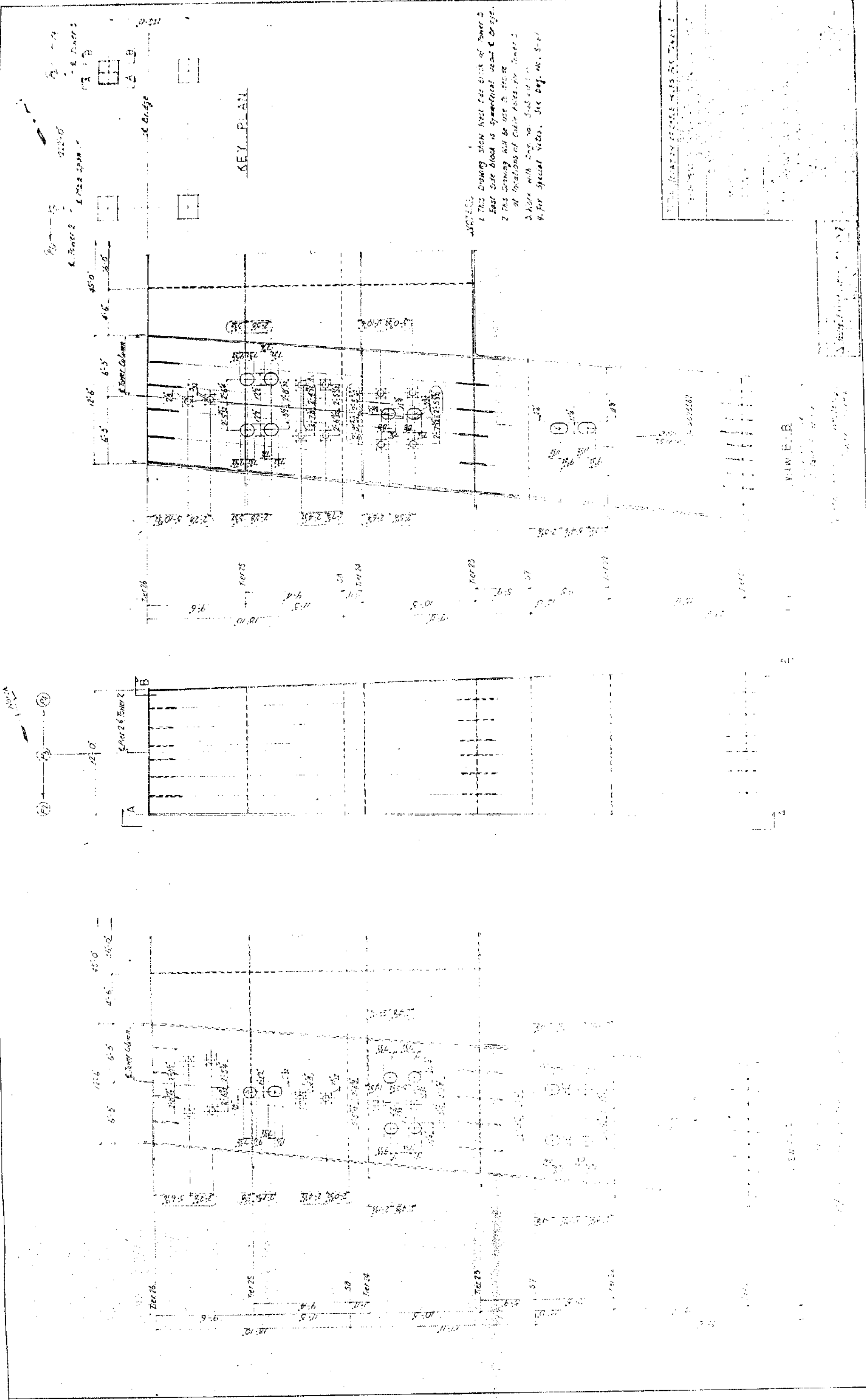
STATE OF LOUISIANA  
 DEPARTMENT OF TRANSPORTATION AND INFRASTRUCTURE  
 OFFICE OF HIGHWAYS

STATE PROJECT NO. 150-SP-02  
 F.P. NO. 1-10-100-004  
 MISSISSIPPI RIVER BRIDGE  
 MAIN RIVER BRIDGE

DESIGNED BY: [Name]  
 CHECKED BY: [Name]  
 DRAWN BY: [Name]

As per detail shown materials will be furnished by PESSIER CO.

**SECTION 2-B**



- 1 This Drawing show West side elev. of Tower 2
- East side block is symmetrical west & bridge.
- 2 This Drawing will be use in 112-0
- 3 At locations of other notes for Tower 2
- 4 Note with tag no. See 112-0
- 5 For Special notes. See Def. no. 5-1





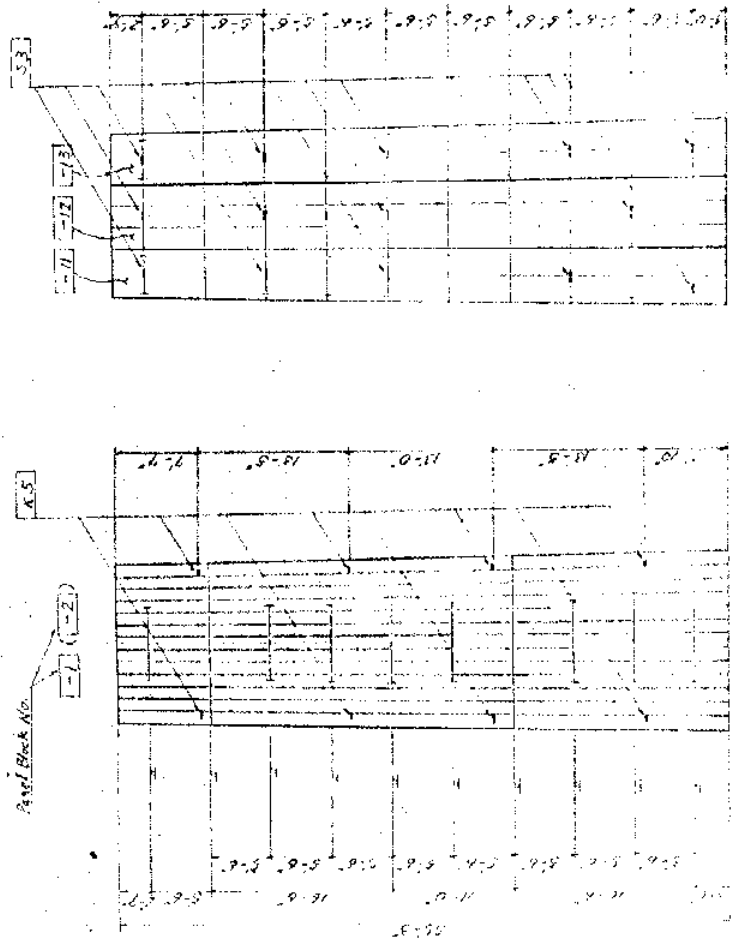




PADKEYS FOR PANEL BLOCK (LOWER T.B.)

Padkeys [H.S.] will be removed and ground smooth the surface of tower.

Scale 1/8" = 1'-0"

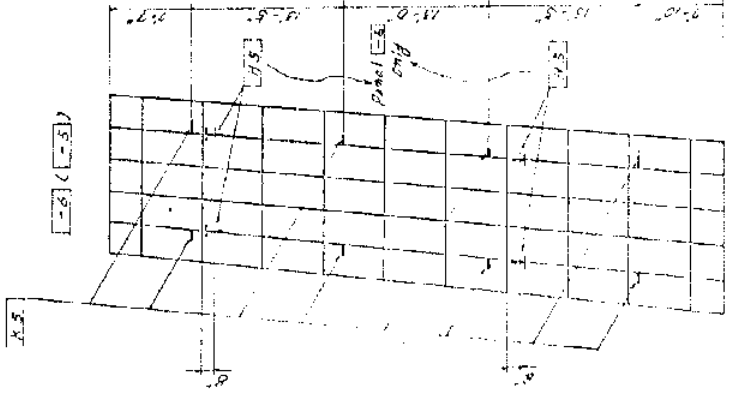
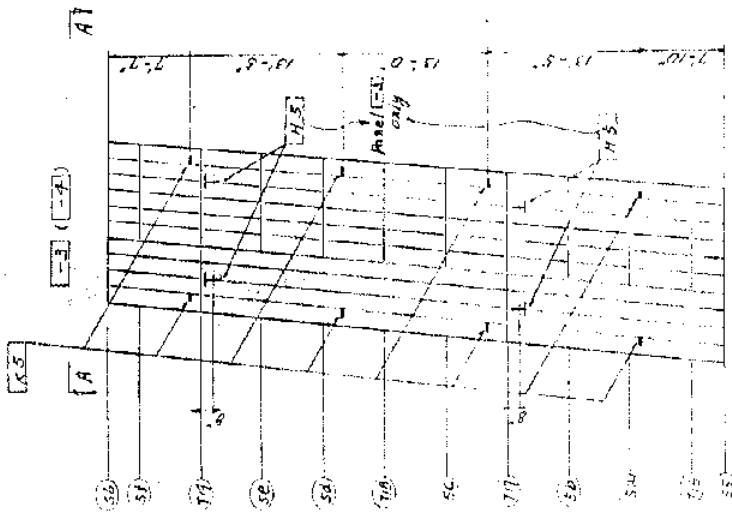


SEC. B-B

SEC. C-C

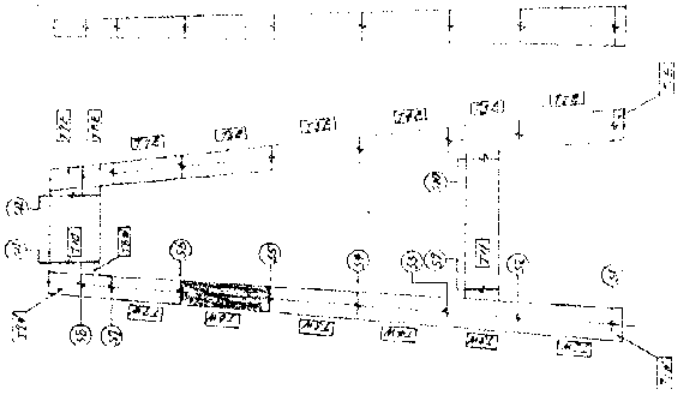
SEC. D-D

SEC. E-E



KEY ELEV.

Scale 1/8" = 1'-0"



NOTES

1. For details of padkeys see page 10 of this set.
2. For additional notes see page 10 of this set.

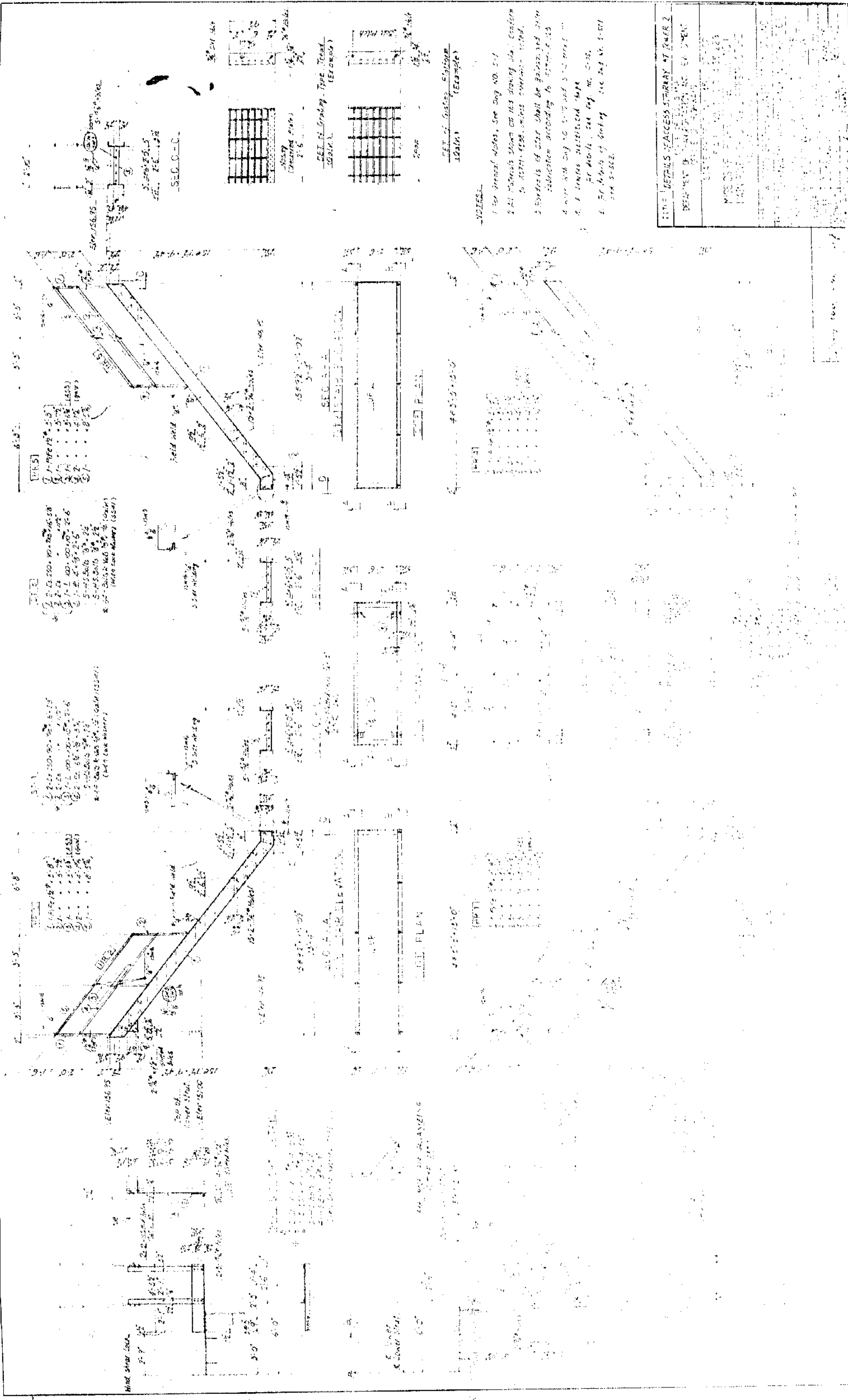
PADKEYS FOR PANEL BLOCK (LOWER T.B.)







71



TITLE: DETAILS ACCESS STAIRWAY AT POWER 2  
 DEPARTMENT OF TRANSPORTATION, INC. BY OWNER  
 PROJECT NO. 100-100-100-100  
 DRAWING NO. 100-100-100-100-100  
 DATE: 10/10/10

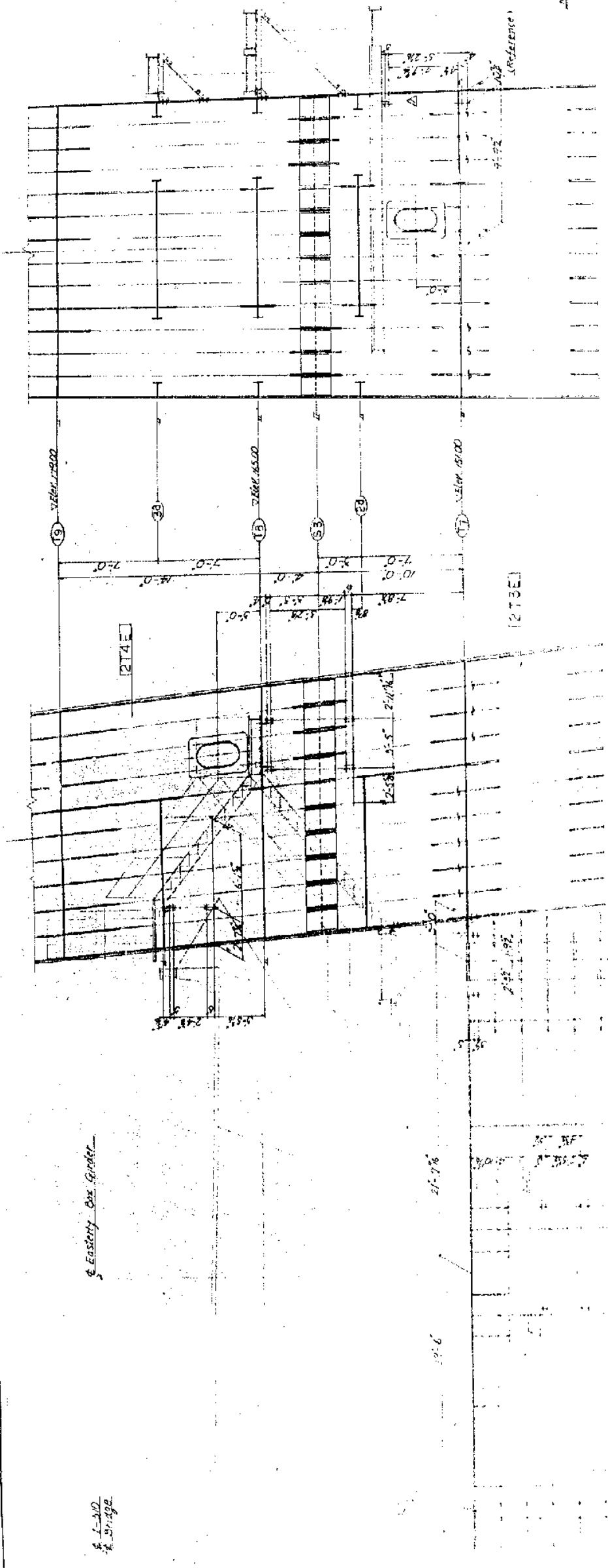
- NOTES:
1. For general notes, see Day No. 1-1
  2. All materials shown on this drawing shall conform to ASTM A 601 unless otherwise noted.
  3. Details of cast shall be prepared and fabrication according to ASTM A 601.
  4. Note that Day No. 1-1 and 1-2 must be used with Day No. 1-3.
  5. For details, see Day No. 1-3.
  6. For details of finish, see Day No. 1-3 and 1-4.











NOTES:

- 1. For General Notes, See Dwg. NO. S-1
- 2. All bolts here are 1/2" diameter.

E. Tower 2 Lower Struc

E. Eastery Tower Column

SEC. B-B

SEC. C-C

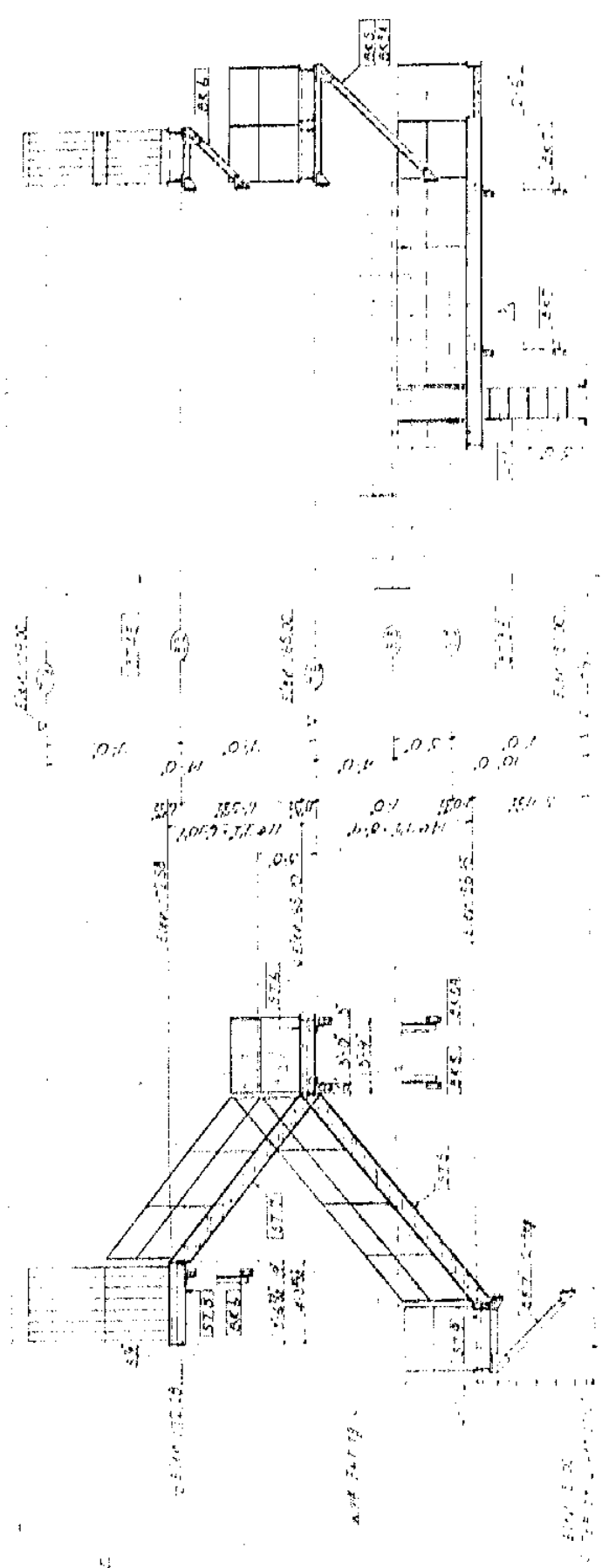
16-42  
 17-26  
 18-12  
 19-00  
 20-00  
 21-00  
 22-00  
 23-00  
 24-00  
 25-00  
 26-00  
 27-00  
 28-00  
 29-00  
 30-00

1 Tower 2 Lower Struc  
 2 Tower 2 Lower Struc  
 Type of tower steel  
 100% steel

EAST TOWER COLUMN ONLY

E. Eastery Tower Column

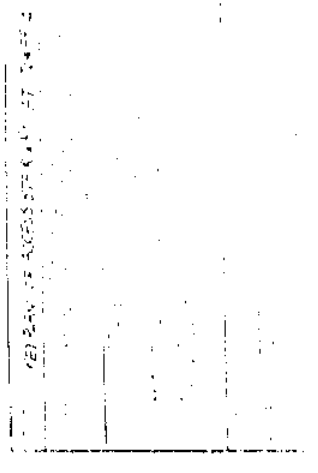
TITLE	LOCATIONS OF CONNECTING BOLT HOLES FOR ACCESS STRAIGHT AT TOWER 2
DATE OF DESIGN	
DEPARTMENT OF TRANSPORTATION AND DEVELOPMENT	
OFFICE OF HIGHWAYS	
STATE PROJECT NO.	500-30-32
S.P. NO.	1-30-40-223
MISSISSIPPI RIVER BRIDGE BUILDING	
MAIN RIVER CROSSING STRUCTURE	
NO. OF SPANS	3
NO. OF PIERS	4
NO. OF TOWERS	2
NO. OF ARCHES	0
NO. OF TRUSS	0
NO. OF GIRDS	0
NO. OF BRACKETS	0
NO. OF BOLTS	0
NO. OF WELDS	0
NO. OF RIVETS	0
NO. OF NUTS	0
NO. OF WASHERS	0
NO. OF ANCHORS	0
NO. OF BRACES	0
NO. OF DIMENSIONS	0
NO. OF SHEETS	0
NO. OF COPIES	0
NO. OF REVISIONS	0
NO. OF APPROVALS	0
NO. OF CHECKS	0
NO. OF CORRECTIONS	0
NO. OF NOTES	0
NO. OF DIMENSIONS	0
NO. OF SHEETS	0
NO. OF COPIES	0
NO. OF REVISIONS	0
NO. OF APPROVALS	0
NO. OF CHECKS	0
NO. OF CORRECTIONS	0
NO. OF NOTES	0

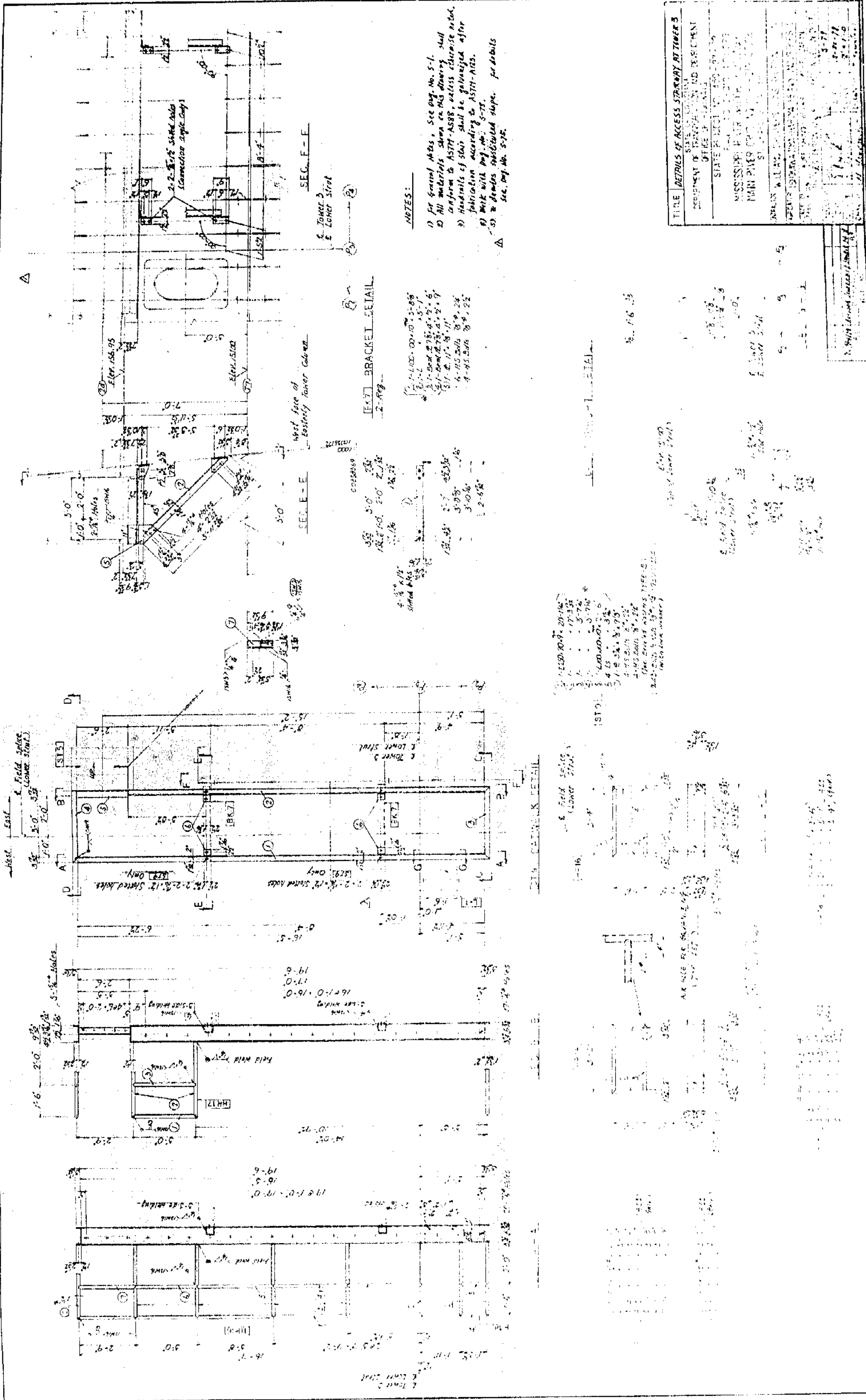


1. Easting Box Girder  
 2. Westing Box Girder  
 3. Northing Box Girder  
 4. Southing Box Girder  
 5. Roof Truss  
 6. Floor Slab  
 7. Column  
 8. Wall  
 9. Window  
 10. Door  
 11. Staircase  
 12. Elevator  
 13. Mechanical Room  
 14. Electrical Room  
 15. Storage Room  
 16. Office  
 17. Conference Room  
 18. Reception Area  
 19. Lobby  
 20. Corridor  
 21. Restroom  
 22. Janitor's Room  
 23. Storage Room  
 24. Mechanical Room  
 25. Electrical Room  
 26. Storage Room  
 27. Office  
 28. Conference Room  
 29. Reception Area  
 30. Lobby  
 31. Corridor  
 32. Restroom  
 33. Janitor's Room  
 34. Storage Room  
 35. Mechanical Room  
 36. Electrical Room  
 37. Storage Room  
 38. Office  
 39. Conference Room  
 40. Reception Area  
 41. Lobby  
 42. Corridor  
 43. Restroom  
 44. Janitor's Room  
 45. Storage Room  
 46. Mechanical Room  
 47. Electrical Room  
 48. Storage Room  
 49. Office  
 50. Conference Room  
 51. Reception Area  
 52. Lobby  
 53. Corridor  
 54. Restroom  
 55. Janitor's Room  
 56. Storage Room  
 57. Mechanical Room  
 58. Electrical Room  
 59. Storage Room  
 60. Office  
 61. Conference Room  
 62. Reception Area  
 63. Lobby  
 64. Corridor  
 65. Restroom  
 66. Janitor's Room  
 67. Storage Room  
 68. Mechanical Room  
 69. Electrical Room  
 70. Storage Room  
 71. Office  
 72. Conference Room  
 73. Reception Area  
 74. Lobby  
 75. Corridor  
 76. Restroom  
 77. Janitor's Room  
 78. Storage Room  
 79. Mechanical Room  
 80. Electrical Room  
 81. Storage Room  
 82. Office  
 83. Conference Room  
 84. Reception Area  
 85. Lobby  
 86. Corridor  
 87. Restroom  
 88. Janitor's Room  
 89. Storage Room  
 90. Mechanical Room  
 91. Electrical Room  
 92. Storage Room  
 93. Office  
 94. Conference Room  
 95. Reception Area  
 96. Lobby  
 97. Corridor  
 98. Restroom  
 99. Janitor's Room  
 100. Storage Room

**NOTES:**

- 1) For general info. see Proj. No. 2-1.
- 2) Details of access stairway at corners are same as page 2, except on floor 27, and 28, 7.
- 3) For Block 279, see 287. See Proj. No. 2-1.
- 4) For details of window 2-1, see Proj. No. 2-1. See section details of lower level and window 2-1, see Proj. No. 2-1. See section details of lower level and window 2-1, see Proj. No. 2-1.
- 5) See Proj. No. 2-1.
- 6) See Proj. No. 2-1.
- 7) See Proj. No. 2-1.
- 8) See Proj. No. 2-1.
- 9) See Proj. No. 2-1.
- 10) See Proj. No. 2-1.
- 11) See Proj. No. 2-1.
- 12) See Proj. No. 2-1.
- 13) See Proj. No. 2-1.
- 14) See Proj. No. 2-1.
- 15) See Proj. No. 2-1.
- 16) See Proj. No. 2-1.
- 17) See Proj. No. 2-1.
- 18) See Proj. No. 2-1.
- 19) See Proj. No. 2-1.
- 20) See Proj. No. 2-1.
- 21) See Proj. No. 2-1.
- 22) See Proj. No. 2-1.
- 23) See Proj. No. 2-1.
- 24) See Proj. No. 2-1.
- 25) See Proj. No. 2-1.
- 26) See Proj. No. 2-1.
- 27) See Proj. No. 2-1.
- 28) See Proj. No. 2-1.
- 29) See Proj. No. 2-1.
- 30) See Proj. No. 2-1.
- 31) See Proj. No. 2-1.
- 32) See Proj. No. 2-1.
- 33) See Proj. No. 2-1.
- 34) See Proj. No. 2-1.
- 35) See Proj. No. 2-1.
- 36) See Proj. No. 2-1.
- 37) See Proj. No. 2-1.
- 38) See Proj. No. 2-1.
- 39) See Proj. No. 2-1.
- 40) See Proj. No. 2-1.
- 41) See Proj. No. 2-1.
- 42) See Proj. No. 2-1.
- 43) See Proj. No. 2-1.
- 44) See Proj. No. 2-1.
- 45) See Proj. No. 2-1.
- 46) See Proj. No. 2-1.
- 47) See Proj. No. 2-1.
- 48) See Proj. No. 2-1.
- 49) See Proj. No. 2-1.
- 50) See Proj. No. 2-1.
- 51) See Proj. No. 2-1.
- 52) See Proj. No. 2-1.
- 53) See Proj. No. 2-1.
- 54) See Proj. No. 2-1.
- 55) See Proj. No. 2-1.
- 56) See Proj. No. 2-1.
- 57) See Proj. No. 2-1.
- 58) See Proj. No. 2-1.
- 59) See Proj. No. 2-1.
- 60) See Proj. No. 2-1.
- 61) See Proj. No. 2-1.
- 62) See Proj. No. 2-1.
- 63) See Proj. No. 2-1.
- 64) See Proj. No. 2-1.
- 65) See Proj. No. 2-1.
- 66) See Proj. No. 2-1.
- 67) See Proj. No. 2-1.
- 68) See Proj. No. 2-1.
- 69) See Proj. No. 2-1.
- 70) See Proj. No. 2-1.
- 71) See Proj. No. 2-1.
- 72) See Proj. No. 2-1.
- 73) See Proj. No. 2-1.
- 74) See Proj. No. 2-1.
- 75) See Proj. No. 2-1.
- 76) See Proj. No. 2-1.
- 77) See Proj. No. 2-1.
- 78) See Proj. No. 2-1.
- 79) See Proj. No. 2-1.
- 80) See Proj. No. 2-1.
- 81) See Proj. No. 2-1.
- 82) See Proj. No. 2-1.
- 83) See Proj. No. 2-1.
- 84) See Proj. No. 2-1.
- 85) See Proj. No. 2-1.
- 86) See Proj. No. 2-1.
- 87) See Proj. No. 2-1.
- 88) See Proj. No. 2-1.
- 89) See Proj. No. 2-1.
- 90) See Proj. No. 2-1.
- 91) See Proj. No. 2-1.
- 92) See Proj. No. 2-1.
- 93) See Proj. No. 2-1.
- 94) See Proj. No. 2-1.
- 95) See Proj. No. 2-1.
- 96) See Proj. No. 2-1.
- 97) See Proj. No. 2-1.
- 98) See Proj. No. 2-1.
- 99) See Proj. No. 2-1.
- 100) See Proj. No. 2-1.





NOTES:

- 1) For general notes, see Div. No. 5-1.
- 2) All materials shown on this drawing shall conform to ASTM-A588, unless otherwise noted.
- 3) Materials of steel shall be galvanized after fabrication according to ASTM-A653.
- 4) Work with Div. No. 5-7.
- 5) To develop additional steps, for details see Div. No. 5-7c.

EXT. BRACKET DETAIL

2-Ang.

FIELD SPICE (LOWER STAIR)

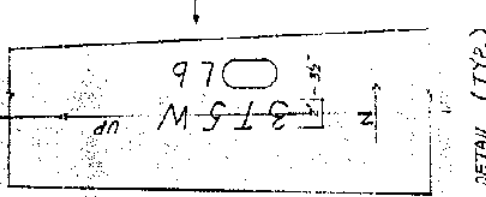
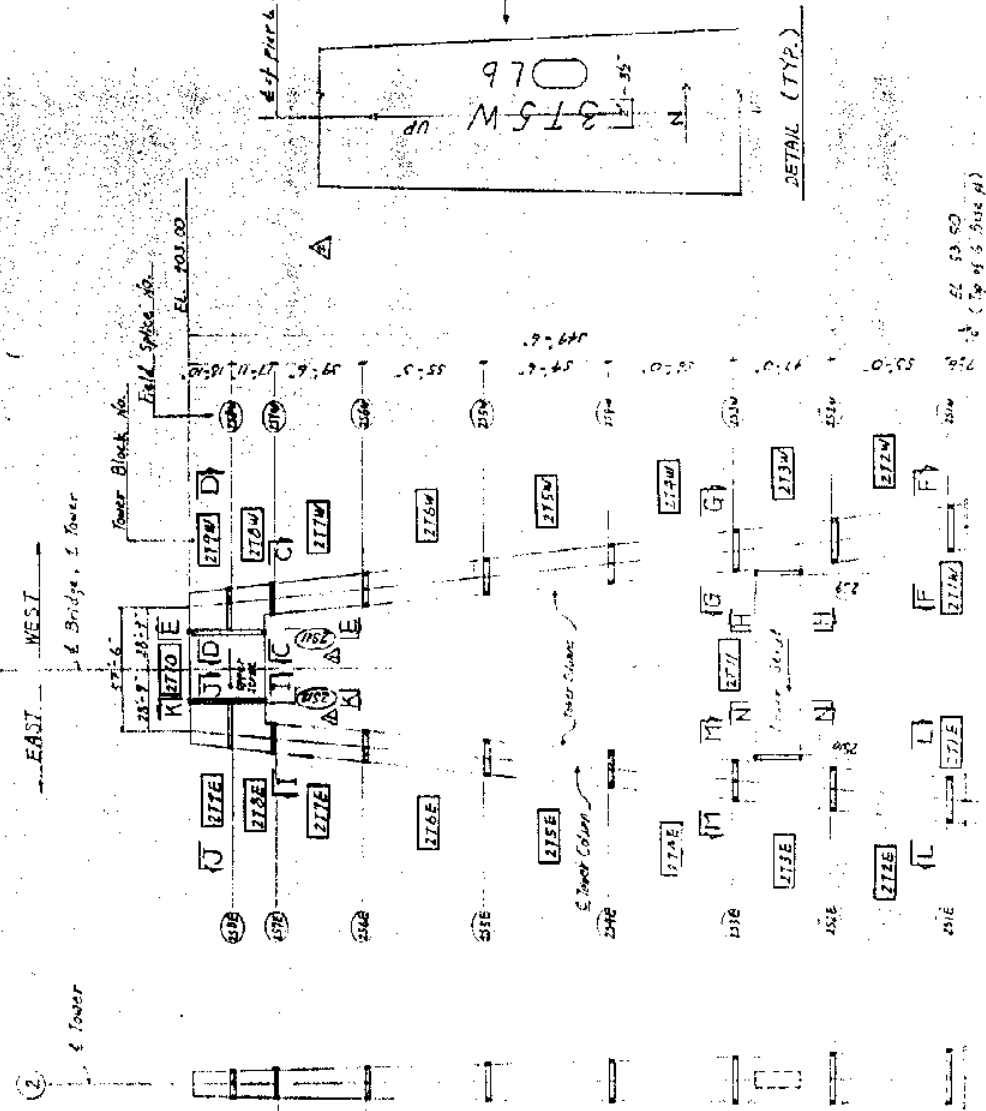
- 1) 1-1/2" x 10" x 20" x 1/2"
- 2) 1-1/2" x 10" x 20" x 1/2"
- 3) 1-1/2" x 10" x 20" x 1/2"
- 4) 1-1/2" x 10" x 20" x 1/2"
- 5) 1-1/2" x 10" x 20" x 1/2"

(Use one of above types - 5.)  
 (Note: 1/2" x 10" x 20" x 1/2" is not to be used.)

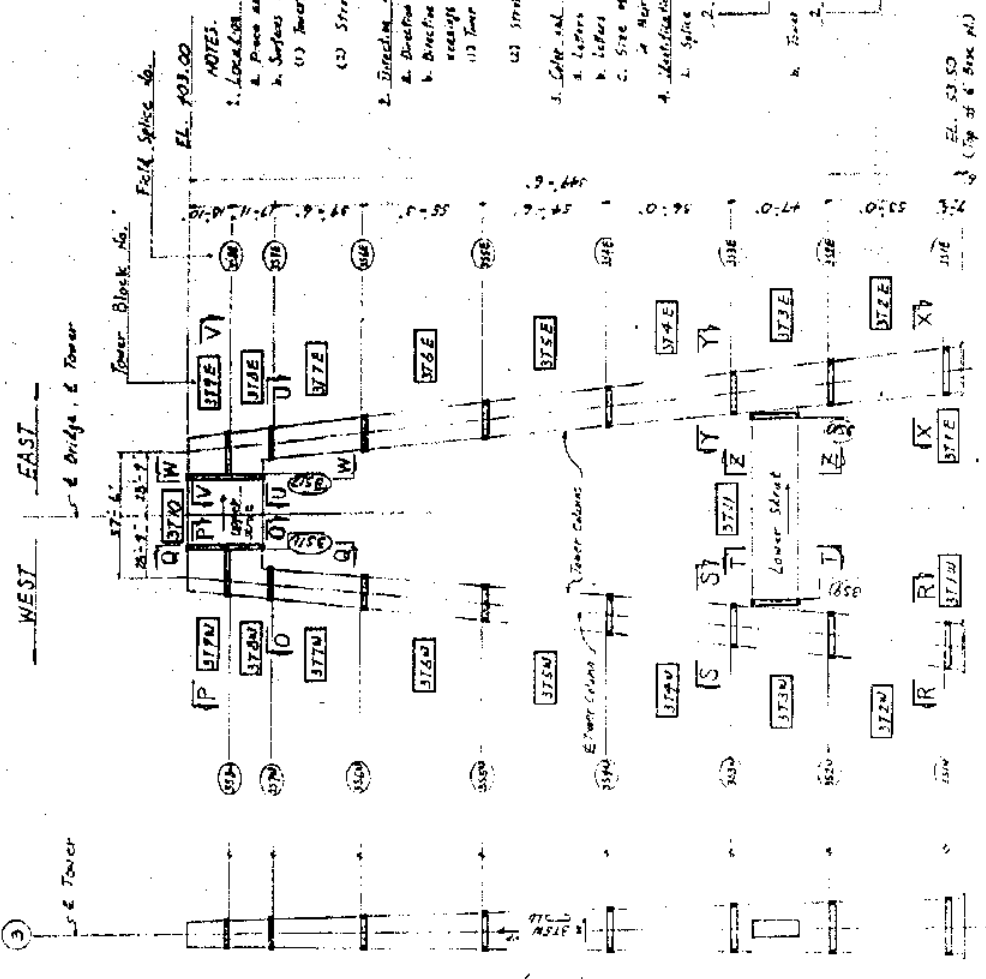
DATE	DESCRIPTION
10-1-77	DETAILS OF ACCESS STAIRWAY AT TOWER 3
10-1-77	STATE OF MISSISSIPPI
10-1-77	DEPARTMENT OF TRANSPORTATION AND DEPARTMENT OF HIGHWAYS
10-1-77	OFFICE OF DESIGN
10-1-77	STATE PROJECT NO. 150-007-00
10-1-77	MISSISSIPPI RIVER WATERWAY IMPROVEMENT PROJECT
10-1-77	MAIN PIER (Pier No. 1) - Tower 3
10-1-77	ST. LOUIS, MISSOURI
10-1-77	ARCHITECT: WILLIAMS BROS. ARCHITECTS, INC.
10-1-77	ENGINEER: WILLIAMS BROS. ARCHITECTS, INC.
10-1-77	SCALE: AS SHOWN
10-1-77	BY: [Signature]
10-1-77	CHECKED: [Signature]
10-1-77	APPROVED: [Signature]

PIECE MARKS PROCEDURE (TOWER) 1/5

TOWER 2



TOWER 3



- PIECE MARKS OF Tower Block 77 and 77 shall be marked center parts of one side and side.
- NOTES:
1. Location of Piece Marks:
    - a. Piece marks shall be on center parts of members.
    - b. Surfaces to be marked as shown.
  2. Tower Column:
    - a. Surface contoured with color line of same bridge, except 77 77.
    - b. A surface contoured with color line of same pier.
  3. Direction of Members:
    - a. Direction of members shall be indicated by a arrow (C=) receipt.
    - b. Direction indicated by the arrow shall have the receipt as follows:
      - i. Tower Column: Upper Side (Same as in view of splice plate).
      - ii. EAST Side (Same as in view of splice plate).
  4. Color and Size of Splice Plates:
    - a. Splice plates shall be white-color painted.
    - b. Labels shall be a Capital.
    - c. Size of letters shall be between 2 inches and 3-1/2 inches in height.
  5. Identification of Marks:
    - a. Splice plates:
      - i. 1. Piece No.
      - ii. 2. From Splice No.
      - iii. 3. Tower No.
    - b. Tower Column:
      - i. 1. Piece No.
      - ii. 2. From Splice No.
      - iii. 3. Tower No.
  6. For typical inspection sequence for shop assembly (Tower) see Det. No. 3-100.
  7. Piece No. and weight shall be stamped in the corner of the tower.

PIECE MARKS PROCEDURE TOWER 2

Member No.	Weight	Location
1	2000	...
2	1500	...
3	1000	...
4	800	...
5	600	...
6	400	...
7	300	...
8	200	...
9	150	...
10	100	...
11	80	...
12	60	...
13	40	...
14	30	...
15	20	...
16	15	...
17	10	...
18	8	...
19	6	...
20	4	...
21	3	...
22	2	...
23	1	...

SEC. A-A

SEC. B-B

1. Mark the stamp machine.
2. Piece No. of splice plate shall be stamped in the corner of splice plate in a of most prominent mark on piece side facing tower.
3. In case marks of splice plate shall be used from the top.
4. Location of marks are shown in figure or as noted on drawing.
5. Weight of stamp is approx. 1000 lbs.
6. Stamp shall be used on disjunct part in circle of stamp at all points.

